



H | S

HYDRO SYSTEMS

Family Owned And Operated Since 1978

If you can dream it, we can build it.

H|S

HYDRO SYSTEMS

Family Owned And Operated Since 1978



MADE IN AMERICA





Lacey





Georgetown

TABLE OF CONTENTS

ABOUT

About Hydro Systems	1
---------------------------	---

BATHTUBS

Tubs by Size	5
Freestanding	7
Drop-in & Alcove	43

TUB REFERENCE GUIDE

Freestanding Tub Specifications	41
Drop-in & Alcove Tub Specifications	81

SHOWER PANS

Square	89
Corner	89
Rectangular	89
Hydroluxe SS™	89
Universal	90

SINKS

Hydroluxe SS™	93
Laundry	95
Petopia	96

SPECIALTY COLLECTION

The Walk-in Tub	97
-----------------------	----

FEATURES & ACCESSORIES

Quality Standards	101
Tub Systems	103
Whirlpool Jets	104
Skirts	105
Hydro Fusion	107
Hydro Indulge	109
HydrOzone	111
Chromatherapy	112
Integral Overflow	113
At-Home Masseur	114
Hydroluxe SS™	115
Additional Options	117

Continuing a Tradition of
EXCELLENCE



FROM HUMBLE BEGINNINGS

An American Dream rooted in humble beginnings, Alan Steinhardt founded Hydro Systems, Inc. in 1978. Opening its doors in Van Nuys, CA, in a garage no bigger than 500 square feet, Alan's mission was simple – to provide high-quality whirlpool bathtubs at affordable prices.

FAMILY OWNED & OPERATED

Throughout each stage of the company's evolution, Alan and his team maintained the pursuit of perfection in crafting the highest-quality product at an affordable price. Now led by Alan's son, Hydro Systems President & Owner Scott Steinhardt, this founding legacy lives on as a third-generation family-run business, with Scott's wife Debra and their three children all working as part of the company operations.

The company that launched with just four employees now employs hundreds of people nationwide. As our infrastructure has grown, we've strived to maintain the same family-run small business mentality, bringing that level of care and attention to all our customers.

DRIVEN BY QUALITY

Hydro Systems builds integrity and quality into each of its bath systems, and firmly believes that customer service must be the utmost priority when it comes to a product designed to alleviate the stresses of everyday life.

We take our high production standards and quality control seriously, seeing it through with our peerless customer service. From the first product inquiry, to placing an order, to receiving a shipment, your satisfaction remains our number one concern. Our Service Department is experienced at handling even the most unique or unexpected situation quickly and effectively.

WEST TO EAST EXPANSION

In 2003, Hydro Systems moved to our current home in Valencia, California: a 110,000 square foot warehouse complete with a state of the art filtration system and prodigious solar array. In 2018, we celebrated our 40th year in business by expanding with a new manufacturing facility based in McDonough, Georgia, a suburb of Atlanta.

The 150,000+ square foot facility enables us to reduce the lead times on all bathtub orders placed in the Eastern United States by weeks. Our east coast hub benefits from its proximity to the Hartsfield-Jackson International Airport and the Port of Savannah, providing a premier location in terms of logistics infrastructure and accessibility, thereby saving our customers money with reduced shipping costs.



PROUDLY MADE IN AMERICA

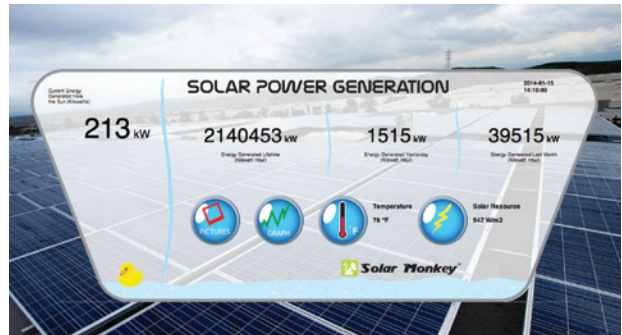
At Hydro Systems, we take pride in using only components made in North America that meet our exacting standards in material and craftsmanship. Also, servicing our customers nationwide via facilities on both ends of the US serves to reduce our carbon footprint.



The Hydro Systems GOLD STANDARD



Aerial photo of Hydro Systems facility and its 450 kW solar grid. The grid captures and converts enough energy to sustain the entire operation.



Hydro Systems power monitoring Kiosk, located in the lobby provides real time and accumulated data regarding current weather conditions and energy production.

GREEN MANUFACTURING: EARLY ADOPTERS, FREQUENT ADAPTERS

Our emphasis on today's environment and tomorrow's future is not a pandering catchphrase or marketing ploy. While "green" or "eco-friendly" may be buzzwords to some, it is business as usual to Hydro Systems and has been since day one.

Throughout our history, Hydro Systems has consistently manufactured our high-quality products and accessories with responsible, green practices. We take pride in our dedication and transparency, which extends to how we power our facility, manufacture our products, package and transport them.

Not only are we committed to our customers, but we are also committed to the world we live in.

A VAST ARRAY OF QUALITY PRODUCTS

From initially manufacturing gel coat tubs to high-end acrylic, to creating our own blend of HydroLuxe SS™ – we have consistently stayed ahead of the curve when it comes to the most modern advances in bathtub technology.

We strive to provide the product choices our customers deserve, manufacturing a wide array of high-quality bathtubs and accessories to suit the varied needs of all our clients. As a result, we're sure you'll find a product designed to meet your unique requirements.

MARKET LEADING WARRANTY

Rest assured, we stand behind the quality of our products. To prove our commitment and ensure your continued satisfaction with your purchase, each bathtub is backed by a corresponding best-in-class warranty.

OUR PROMISE TO YOU

From 1978 to today, Hydro Systems has delivered on our promise to provide our customers with the most innovative, high-end bathing experiences, at the best possible price. We pay close attention to detail, because detail makes the difference in creating a long-lasting product, backed by enduring customer service. We've practiced these founding principles since day one, and are proudly committed to upholding these values as we continue to write the story of Hydro Systems.

TUBS BY SIZE

HYDRO SYSTEMS, INC.

4040

■ Fuji p. 57

4128

■ Sapphire p. 72

4830

■ Granite p. 58

● Soho p. 39

5230

■ Walk-In p. 97

5252

● Mizu p. 31

5428

■ Garnet p. 20

5430

■ Solo p. 74

5431

■ Granite p. 58

5436

■ Regan p. 71

5555

◆ Clarissa p. 51

● Pearl p. 34

5731

■ Summerlin ... p. 40

5736

■ Richmond p. 36

5828

■ Garnet p. 20

5830

● Daniela p. 16

5836

● Guthrie p. 22

5932

■ Citrine p. 50

5959

◆ Rincon p. 72

◆ Studio p. 75

6030

■ Granite p. 58

■ Lacey p. 61

■ Lindsey p. 63

■ Marlie p. 65

■ Shannon p. 73

■ Solitude p. 73

■ Sydney p. 77

6032

● Aubry p. 11

■ Bellevue p. 11

■ Carrera p. 50

■ Coal p. 51

■ Entre p. 56

■ Granite p. 58

■ Kira p. 60

■ Lacey p. 61

■ Lindsey p. 63

● Malia p. 64

■ Marlie p. 65

■ Regan p. 71

■ Rosemarie .. p. 72

■ Shannon p. 73

■ Slate p. 39

■ Solo p. 74

■ Studio p. 75

■ Sydney p. 77

6034

■ Sydney p. 77

6036

● Carli p. 49

● Deanna p. 53

■ Granite p. 58

■ Isabella p. 58

■ Kona p. 60

■ Lacey p. 61

■ Lindsey p. 63

■ Marlie p. 65

● Picasso p. 35

■ Regan p. 71

■ Ruby p. 72

■ Solo p. 74

■ Studio p. 75

■ Sydney p. 77

6038

● Casey p. 13

● Galaxie p. 57

● Sylvia p. 77

6040

● Deanna p. 53

■ Fuji - 26 p. 57

■ Fuji - 32 p. 57

6042

■ Cassi p. 50

■ Evansport .. p. 56

■ Fantasy p. 56

■ Kona 15 p. 60

■ Kona 18 p. 60

■ Kona 20 p. 60

■ Lacey p. 61

● Lorraine p. 63

● Malia p. 64

■ Marie p. 64

■ Monterey ... p. 66

■ Ovation p. 68

● Riley p. 71

■ Ruby p. 72

■ Studio p. 75

■ Studio HG .. p. 76

● Studio Oval p. 77

6048

■ Alexis p. 45

■ Ashley p. 47

◆ Courtney ... p. 52

■ Duo p. 53

■ Jessica p. 59

6060

◆ Erica p. 56

◆ Lara p. 62

● Redondo ... p. 70

● Pearl p. 34

6132

● Rodeo p. 38

6228

● Newbury p. 32

6262

◆ Whitney p. 80

6328

■ Lacey p. 61

6332

● Liberty p. 26

6333

■ Millennium .. p. 30

● Opal p. 34

■ Pacific p. 34

● Quartz p. 69

6431

● Biscayne p. 12

6436

● Anaha p. 9

■ Manhattan .. p. 28

6464

◆ Eclipse p. 53

6530

■ Garnet p. 20

6536

● Annette p. 10

● Emerald p. 55

6630

■ Lacey p. 61

■ Solo p. 74

6631

● Newbury p. 32

6632

■ Chagall p. 14

● Chateau p. 15

■ Coal p. 51

● Elle p. 54

■ Entre p. 56

● Estee p. 19

● Eveline p. 19

● Jade p. 24

■ Lacey p. 61

■ Lindsey p. 63

■ Marlie p. 65

■ Marquis p. 29

■ Regan p. 71

■ Shannon p. 73

■ Sydney p. 77

6634

■ Carrera p. 50

■ Slate p. 39

■ Solo p. 74

6636

● Breanne p. 13

● Carli p. 49

■ Cheyenne .. p. 15

■ Domingo ... p. 18

■ Donatello ... p. 18

■ Granite p. 58

■ Isabella p. 58

■ Lacey p. 61

■ Lexie p. 25

■ Lindsey p. 63

■ Lucy p. 27

■ Marlie p. 65

■ Melissa p. 65

■ Michelangelo p. 30

■ Natasha p. 67

● Palmer p. 68

● Picasso p. 35

■ Rachael p. 69

■ Rockwell-**FS** p. 36

■ Versailles ... p. 80

6638

● Casey p. 13

● Galaxie p. 57

● Sylvia p. 77

6639

● Amber p. 45

6640

● Jacqueline .. p. 23

● Kimberly p. 60

6642

● Alyssa p. 45

■ Angel p. 46

■ Duo p. 53

■ Emma p. 55

● Galaxie p. 57

● Liliana p. 62

■ Ovation p. 68

■ RECTANGLE

● OVAL

◆ CORNER

● ROUND

FS = FREESTANDING

- Riley p. 71
- Studio Oval p. 77
- Sylvia p. 77

6644

- Galaxie p. 57
- Savannah ... p. 73
- Studio DO .. p. 76

6645

- Corazon p. 52

6648

- Duo p. 53

6834

- Hyde p. 23

6835

- Tribeca p. 40

6836

- Denali p. 17

6948

- Topaz p. 79

6969

- ◆ Katarina p. 59
- Redondo ... p. 70

7032

- Gateway p. 21

7035

- Georgetown p. 22

7036

- Charlize p. 14
- Davinci p. 17
- Domingo ... p. 18
- Donatello ... p. 18
- Mellenie p. 65
- Michelangelo p. 30
- Natasha p. 67
- Palmer p. 68
- Rockwell p. 36
- Stella p. 74

7040

- Chloe p. 16
- Kellie p. 24
- Lauren p. 25
- Marissa p. 65
- Noelle p. 67
- Sophia p. 39

7043

- Regal p. 70

7046

- Crystal p. 52

7134

- Regal p. 70

7232

- Kira p. 60
- Lacey p. 61
- Regan p. 71
- Sydney p. 77

7236

- Aimee p. 45
- Caribe p. 49
- Carrera p. 50
- Charlotte ... p. 50
- Cheyenne ... p. 15
- Elle p. 54
- Estee p. 19
- Eveline p. 19
- Granite p. 58
- Isabella p. 58
- Lacey p. 61
- Lindsey p. 63
- Lucy p. 27
- Melissa p. 65
- Premier p. 69
- Rachael p. 69
- Ruby p. 72
- Slate p. 39
- Solo p. 74
- Studio p. 76
- Sydney p. 77
- Versailles ... p. 80

7238

- Andrea p. 9
- Chagall p. 14
- Logan p. 27
- Mitra p. 31
- Rodin p. 38

7240

- Carli p. 49
- Elizabeth ... p. 19
- Kimberly ... p. 60
- Lacey p. 61
- Picasso p. 35
- Sydney p. 77

7242

- Angel p. 46
- Angel ED ... p. 47
- Debra p. 53
- Emerald p. 55
- Evansport .. p. 56
- Fantasy p. 56
- Monterey ... p. 66
- Ovation p. 68
- Riley p. 71
- Studio p. 76
- Studio HG .. p. 76
- Studio Oval p. 77
- Vanessa p. 79
- Versailles ... p. 80
- Yvette p. 80

7244

- Nina p. 67
- Nina-**FS** p. 32

7248

- Ashley p. 47
- Duo p. 53
- Jennifer p. 58
- Jessica p. 59

7254

- Lacey p. 61

7260

- Penthouse .. p. 69

7341

- Danika p. 52

7342

- Ruby p. 72

7348

- Victoria p. 80

7438

- Eileen p. 54

7442

- Kayla p. 60
- Premier p. 69

7444

- Corazon p. 52
- Galaxie p. 57
- Lorraine p. 63
- Savannah ... p. 73
- Studio DO .. p. 76

7445

- Amber p. 45
- Corazon p. 52
- Topaz p. 79

7448

- Atlandia p. 47

7545

- Corazon p. 52

7547

- Premier p. 69

7548

- Makyla p. 63

7844

- Crystal p. 52
- Mystique ... p. 66
- Natalie p. 67

7848

- Alyssa p. 45

8043

- Auburn p. 47

8053

- Crystal p. 52

8066

- Auburn p. 47

8264

- Largo p. 62

8348

- Crystal p. 52

8442

- Ovation p. 68

8448

- Crystal p. 52

8650

- Eileen p. 54



FREESTANDING BATHTUBS

ALAMO

METRO COLLECTION

58" L x 31" W x 21" D | 66" L x 34" W x 21" D | 70" L x 34" W x 21" D
Center Drain | Hydroluxe SS™ | Soaking & Thermal Air Tub



ANAHA

METRO COLLECTION

64" L x 36" W x 24" D | End Drain | Hydroluxe SS™ | Faucet Deck | Soaking & Thermal Air Tub



ANDREA

STON COLLECTION

72" L x 38" W x 21 - 24" D | Center Drain | Hydroluxe SS™ | Soaking Tub Only





ANNETTE

STON COLLECTION

End Drain | Hydroluxe SS™ | Soaking Tub Only



65" L x 36" W x 21 - 24" D | Sloped Deck



65" L x 36" W x 21" D | Flat Deck



AUBRY

STUDIO COLLECTION

60" L x 32" W x 20" D | End Drain | Acrylic | Faucet Deck | Soaking & Thermal Air Tub



BELLEVUE

METRO COLLECTION

60" L x 32" W x 24" D | Center Drain | Hydroluxe SS™ | Soaking & Thermal Air Tub



BISCAYNE

METRO COLLECTION

64" L x 31" W x 24 - 25" D | Center Drain | Hydroluxe SS™ | Soaking & Thermal Air Tub



Biscayne



Breanne

BREANNE

STUDIO COLLECTION

66" L x 36" W x 25" D | Side Center Drain | Acrylic | Faucet Deck | Soaking & Thermal Air Tub



CASEY

DESIGNER COLLECTION

60" L x 38" W x 19" D | 66" L x 38" W x 19" D | Side Center Drain | Acrylic | Soaking & Thermal Air Tub



CHAGALL

DESIGNER COLLECTION

66" L x 32" W x 24" D | 72" L x 38" W x 24" D | Center Drain | Acrylic | Soaking & Thermal Air Tub



CHARLIZE

STUDIO COLLECTION

70" L x 36" W x 22" D | Center Drain | Acrylic | Faucet Deck | Soaking & Thermal Air Tub



CHATEAU

METRO COLLECTION

66" L x 32" W x 24" D | Side Center Drain | Hydroluxe SS™ | Faucet Deck | Soaking & Thermal Air Tub



CHEYENNE

DESIGNER COLLECTION

66" L x 36" W x 20" D | 72" L x 36" W x 20" D | Hidden Center Drain | Acrylic | Soaking & Thermal Air Tub



CHLOE

DESIGNER COLLECTION

70" L x 40" W x 27" D | Side Center Drain | Acrylic | Soaking & Thermal Air Tub



DANIELA

STON COLLECTION

58" L x 30" W x 21" D | End Drain | Hydroluxe SS™ | Soaking Tub Only



Room designed by Eva Quateman Interiors, Chicago, IL

Daniela

DAVINCI

DESIGNER COLLECTION

70" L x 36" W x 25" D | Side Center Drain | Acrylic | Soaking & Thermal Air Tub



DENALI

METRO COLLECTION

68" L x 36" W x 22 - 27" D | Center Drain | Hydroluxe SS™ | Soaking & Thermal Air Tub





DOMINGO

DESIGNER COLLECTION

66" L x 36" W x 24" D | 70" L x 36" W x 24" D | Side Center Drain | Acrylic | Soaking & Thermal Air Tub



DONATELLO

DESIGNER COLLECTION

66" L x 36" W x 24" D | 70" L x 36" W x 24" D | Side Center Drain | Acrylic | Soaking & Thermal Air Tub



ELIZABETH

DESIGNER COLLECTION

72"L x 40"W x 27"D | Center Drain | Acrylic | Soaking & Thermal Air Tub



ESTEE

DESIGNER COLLECTION

66"L x 32"W x 24"D | 72"L x 36"W x 24"D | Center Drain | Acrylic | Soaking & Thermal Air Tub



EVELINE

STUDIO COLLECTION

66"L x 32"W x 24"D | 72"L x 36"W x 24"D |
Center Drain | Acrylic | Faucet Deck | Soaking & Thermal Air Tub



GARNET

STON COLLECTION

54" L x 28" W x 23" D | 58" L x 28" W x 23" D | 65" L x 30" W x 23" D
Center Drain | Hydroluxe SS™ | Soaking Tub Only



Garnet



GATEWAY

METRO COLLECTION

70" L x 32" W x 18" D | End Drain | Hydroluxe SS™ | Soaking & Thermal Air Tub



GEORGETOWN

METRO COLLECTION

70"L x 35"W x 22 - 25"D | Center Drain | Hydroluxe SS™ | Soaking & Thermal Air Tub



GUTHRIE

METRO COLLECTION

58"L x 36"W x 24"D | Center Drain | Hydroluxe SS™ | Faucet Shelf | Soaking & Thermal Air Tub





HYDE

METRO COLLECTION

68" L x 34" W x 24" D | Center Drain | Hydroluxe SS™ | Soaking & Thermal Air Tub



JACQUELINE

DESIGNER COLLECTION

66" L x 40" W x 24" D | End Drain | Acrylic | Soaking, Thermal Air, Whirlpool, and Combo System Tub



JADE

STON COLLECTION

65"L x 32"W x 20 - 23"D | Center Drain | Hydroluxe SS™ | Soaking Model Only



KELLIE

DESIGNER COLLECTION

70"L x 40"W x 26"D | Side Center Drain | Acrylic | Soaking & Thermal Air Tub



LAUREN

DESIGNER COLLECTION

70" L x 40" W x 27" D | Side Center Drain | Acrylic | Soaking & Thermal Air Tub



LEXIE

DESIGNER COLLECTION

66" L x 36" W x 20" D | Hidden End Drain | Acrylic | Soaking & Thermal Air Tub





Liberty

LIBERTY

METRO COLLECTION

63"L x 32"W x 24"D | Center Drain | Hydroluxe SS™ | Soaking & Thermal Air Tub





LOGAN

METRO COLLECTION

72" L x 38" W x 20 - 23" D | Center Drain | Hydroluxe SS™ | Soaking & Thermal Air Tub



LUCY

DESIGNER COLLECTION

66" L x 36" W x 20" D | 72" L x 36" W x 20" D | End Drain | Acrylic | Soaking & Thermal Air Tub



MANHATTAN

METRO COLLECTION

64" L x 36" W x 24" D | Center Drain | Hydroluxe SS™ | Soaking & Thermal Air Tub



Manhattan

MARQUIS

METRO COLLECTION

65" L x 32" W x 20-23" D | Center Drain | Hydroluxe SS™ | Soaking & Thermal Air Tub



Michelangelo

Room Designed by Tidbits & Twine

MICHELANGELO

DESIGNER COLLECTION

66"L x 36"W x 23"D | 70"L x 36"W x 23"D | Side Center Drain | Acrylic | Soaking & Thermal Air Tub



MILLENNIUM

METRO COLLECTION

63"L x 33"W x 22"D | Center Drain | Hydroluxe SS™ | Soaking & Thermal Air Tub



Bathtub Designed by L2 Interiors, Santa Monica, CA

Millennium

MITRA

STON COLLECTION

72" L x 38" W x 25 - 30" D | Center Drain | Hydroluxe SS™ | Soaking & Thermal Air Tub



MIZU

METRO COLLECTION

52" Diameter x 27" D | Side Center Drain | Hydroluxe SS™ | Soaking & Thermal Air Tub



NANCY

DESIGNER COLLECTION

72" x 36" W x 20" D | Side Center Drain | Acrylic | Soaking & Thermal Air Tub





NEWBURY

METRO COLLECTION

62"L x 28"W x 24"D | 66"L x 31"W x 24"D | Center Drain | Hydroluxe SS™ | Soaking & Thermal Air Tub



NINA (FREESTANDING)

DESIGNER COLLECTION

72"L x 44"W x 22"D | Side Center Drain | Acrylic | Soaking, Thermal Air, Whirlpool, and Combo System Tub





Opal

Room Designed by Paul & Becky Heintz of Local Studio LA

OPAL

STON COLLECTION

63"L x 33"W x 23"D | Center Drain | Hydroluxe SS™ | Soaking Tub Only



PACIFIC

METRO COLLECTION

63"L x 33"W x 22"D | End Drain | Hydroluxe SS™ | Soaking Tub Only



PEARL

STON COLLECTION

55"Diameter x 19"D | Side Drain | Hydroluxe SS™ | Soaking Tub Only
 60"Diameter x 19"D | Center Drain | Hydroluxe SS™ | Soaking Tub Only



PICASSO

DESIGNER COLLECTION

60" L x 36" W x 21" D | 72" L x 40" W x 27" D | End Drain | Acrylic | Soaking & Thermal Air Tub
66" L x 36" W x 27" D | Center Drain | Acrylic | Soaking & Thermal Air Tub



Picasso

Room Designed by Angela Todd Studios, Portland, OR

RICHMOND

METRO COLLECTION

57" L x 36" W x 24" D | Center Drain | Hydroluxe SS™ | Faucet Shelf | Soaking & Thermal Air Tub



Richmond

ROCKWELL

DESIGNER COLLECTION

66" L x 36" W x 24" D | 70" L x 36" W x 24" D | Center Drain | Acrylic | Soaking & Thermal Air Tub





Rodeo.

RODEO

METRO COLLECTION

61"L x 32"W x 22 - 30"D | End Drain | Hydroluxe SS™ | Soaking & Thermal Air Tub



RODIN

DESIGNER COLLECTION

72"L x 38"W x 25"D | Center Drain | Acrylic | Soaking & Thermal Air Tub



SLATE

STON COLLECTION

60" L x 32" W x 23" D | End Drain

60" L x 32" W x 24" D | 66" L x 34" W x 24" D | 72" L x 36" W x 24" D | Center Drain

Hydroluxe SS™ | Soaking & Thermal Air Tub



SOHO

METRO COLLECTION

48" L x 30" W x 22" D | End Drain | Hydroluxe SS™ | Soaking & Thermal Air Tub



SOPHIA

DESIGNER COLLECTION

70" L x 40" W x 26" D | Side Center Drain | Acrylic | Soaking & Thermal Air Tub



SUMMERLIN

METRO COLLECTION

57" L x 31" W x 22" D | Center Drain | Hydroluxe SS™ | Soaking & Thermal Air Tub



TRIBECA

METRO COLLECTION

68" L x 35" W x 22" D | Center Drain | Hydroluxe SS™ | Soaking & Thermal Air Tub



FREESTANDING COLLECTION SPECIFICATIONS

MODEL NAME & OUTSIDE DIMENSIONS (length X width X depth)	TUB MATERIAL*	SLOPE OF BACKREST	LUMBAR SUPPORT	FAUCET DECK / SHELF	LINEAR INTEGRAL	ROUND INTEGRAL	EXPOSED OVERFLOW	THERMAL AIR	LED CHROMA-THERAPY	GRAB BARS	HYDRO BLANKET	DUAL COLORS	METALLIC FINISH	REMOTE CONTROL	TOWER
Alamo 58 X 31 X 21	SS	28°	•		•			•				•	•	•	•
Anaha 64 X 36 X 24	SS	15°	•	•	•			•				•	•	•	•
Andrea 72 X 38 X 21-24	SS	34°	•				•					•	•		
Annette S 65 X 36 X 20-24	SS	34°	•				•					•	•		
Annette F 65 X 36 X 21	SS	34°	•				•					•	•		
Aubry 60 X 32 X 20	A	27°		•	•	•		•	•	•	•	•	•	•	•
Bellevue 60 X 32 X 24	SS	15°			•			•				•	•	•	•
Biscayne 64 X 31 X 24-25	SS	11°	•		•			•				•	•	•	•
Breanne 66 X 36 X 25	A	29°	•	•	•	•		•	•	•	•	•	•	•	•
Casey 60 X 38 X 19	A	27°			•	•		•	•	•	•	•	•	•	•
Casey 66 X 38 X 19	A	27°			•	•		•	•	•	•	•	•	•	•
Chagall 66 X 32 X 24	A	19°			•	•		•	•	•	•	•	•	•	•
Chagall 72 X 38 X 24	A	19°			•	•		•	•	•	•	•	•	•	•
Charlize 70 X 36 X 22	A	28°		•	•	•		•	•	•	•	•	•	•	•
Chateau 66 X 32 X 24	SS	15°	•	•	•			•				•	•	•	•
Cheyenne 66 X 36 X 20	A	25°			•	•		•	•	•	•	•	•	•	•
Cheyenne 72 X 36 X 20	A	25°			•	•		•	•	•	•	•	•	•	•
Daniela 58 X 30 X 20	SS	34°					•					•	•		•
Davinci 70 X 36 X 25	A	23°	•		•	•		•	•	•	•	•	•	•	•
Denali 68 X 36 X 22-27	SS	33°	•		•			•				•	•	•	•
Domingo 66 X 36 X 24	A	18°	•		•	•		•	•	•	•	•	•	•	•
Domingo 70 X 36 X 24	A	18°	•		•	•		•	•	•	•	•	•	•	•
Donatello 66 X 36 X 24	A	18°	•		•	•		•	•	•	•	•	•	•	•
Donatello 70 X 36 X 24	A	18°	•		•	•		•	•	•	•	•	•	•	•
Elizabeth 72 X 40 X 27	A	32°	•		•	•		•	•	•	•	•	•	•	•
Estee 66 X 32 X 24	A	35°		•	•	•		•	•	•	•	•	•	•	•
Estee 72 X 36 X 24	A	35°		•	•	•		•	•	•	•	•	•	•	•
Eveline 66 X 32 X 24	A	35°		•	•	•		•	•	•	•	•	•	•	•
Eveline 72 X 36 X 24	A	35°		•	•	•		•	•	•	•	•	•	•	•
Garnet 54 X 28 X 25	SS	35°					•					•	•		•
Garnet 58 X 28 X 25	SS	35°					•					•	•		•
Garnet 65 X 30 X 25	SS	35°					•					•	•		•
Gateway 70 X 32 X 18	SS	56°	•		•			•				•	•	•	•
Georgetown 70 X 35 X 22-25	SS	30°	•		•			•				•	•	•	•
Guthrie 58 X 36 X 24	SS	28°	•	•	•			•				•	•	•	•
Hyde 68 X 34 X 24	SS	28°			•			•				•	•	•	•
Jacqueline 66 X 40 X 24	A	40°			•	•		•	•	•	•	•	•	•	•
Jade 65 X 32 X 20-23	SS	35°	•				•					•	•		•

* A = ACRYLIC G = GEL COAT SS = HYDROLUXE SS™
 OPTIONS IN RED ARE STANDARD WITH TUB

MODEL NAME & OUTSIDE DIMENSIONS (length X width X depth)	TUB MATERIAL*	SLOPE OF BACKREST	LUMBAR SUPPORT	FAUCET DECK / SHELF	LINEAR INTEGRAL	ROUND INTEGRAL	EXPOSED OVERFLOW	THERMAL AIR	LED CHROMA-THERAPY	GRAB BARS	HYDRO BLANKET	DUAL COLORS	METALLIC FINISH	REMOTE CONTROL	TOWER
Kellie 70 X 40 X 26	A	26°	•		•	•		•	•	•	•	•	•	•	•
Lauren 70 X 40 X 27	A	30°	•		•	•		•	•	•	•	•	•	•	•
Lexie 66 X 36 X 20	A	26°			•	•		•	•	•	•	•	•	•	•
Liberty 63 X 32 X 24	SS	28°	•		•			•				•	•	•	•
Logan 72 X 38 X 20-23	SS	48°	•		•			•				•	•	•	•
Lucy 66 X 36 X 20	A	28°			•	•		•	•	•	•	•	•	•	•
Lucy 72 X 36 X 20	A	28°			•	•		•	•	•	•	•	•	•	•
Manhattan 64 X 36 X 24	SS	19°			•			•				•	•	•	•
Marquis 65 X 32 X 20-23	SS	35°	•		•			•				•	•	•	•
Michelangelo 66 X 36 X 23	A	22°			•	•		•	•	•	•	•	•	•	•
Michelangelo 70 X 36 X 23	A	18°			•	•		•	•	•	•	•	•	•	•
Millennium 63 X 33 X 23	SS	38°			•			•				•	•	•	•
Mitra 72 X 38 X 25-30	SS	35°	•				•	•				•	•	•	•
Mizu 52 Dia X 27	SS	8°			•			•				•	•	•	•
Nancy 72 X 36 X 20	A	31°			•	•		•	•	•	•	•	•	•	•
Newbury 62 X 28 X 24	SS	14°			•			•				•	•	•	•
Newbury 66 X 31 X 24	SS	14°			•			•				•	•	•	•
Nina 72 X 44 X 22	A	30°			•	•		•	•	•	•	•	•	•	•
Opal 63 X 33 X 23	SS	35°					•					•	•		•
Pacific 63 X 33 X 22	SS	47°			•							•	•		•
Pearl 55 Dia X 19	SS	16°					•					•	•		•
Pearl 60 Dia X 19	SS	20°					•					•	•		•
Picasso 60 X 36 X 20-21	A	23°			•	•		•	•	•	•	•	•	•	•
Picasso 66 X 36 X 22-27	A	36°			•	•		•	•	•	•	•	•	•	•
Picasso 72 X 40 X 20-27	A	40°			•	•		•	•	•	•	•	•	•	•
Richmond 57 X 36 X 24	SS	15°	•	•	•			•				•	•	•	•
Rockwell 66 X 36 X 24	A	22°	•		•	•		•	•	•	•	•	•	•	•
Rockwell 70 X 36 X 24	A	22°	•		•	•		•	•	•	•	•	•	•	•
Rodeo 61 X 32 X 22-30	SS	22°	•		•			•				•	•	•	•
Rodin 72 X 38 X 25	A	13°			•	•		•	•	•	•	•	•	•	•
Slate 60 X 32 X 23	SS	28°	•		•			•				•	•	•	•
Slate 60 X 33 X 24	SS	28°	•		•			•				•	•	•	•
Slate 66 X 34 X 24	SS	28°	•		•			•				•	•	•	•
Slate 72 X 36 X 24	SS	28°	•		•			•				•	•	•	•
Soho 48 X 30 X 22	SS	26°	•		•			•				•	•	•	•
Sophia 70 X 40 X 26	A	30°	•		•	•		•	•	•	•	•	•	•	•
Summerlin 57 X 31 X 22	SS	15°	•		•			•				•	•	•	•
Tribeca 68 X 35 X 22	SS	12°	•		•			•				•	•	•	•





ALCOVE & DROP-IN BATHTUBS



Edge Profile

AIMEE

DESIGNER COLLECTION

72"L x 36"W x 24"D | Side-Center Drain | Acrylic
Soaking, Thermal Air, Whirlpool, & Combo
Includes Armrest
Deck-Mount Only
As Shown: Whirlpool option w/ standard 6 jets



ALEXIS

DESIGNER COLLECTION

60"L x 48"W x 20"D | End Drain | Acrylic
Soaking, Thermal Air, Whirlpool, & Combo
Deck-Mount or Under-Mount
As Shown: Whirlpool option w/ standard 8 jets



Edge Profile

ALYSSA

DESIGNER COLLECTION

66"L x 42"W x 20"D | 78"L x 48"W x 20"D
Side-Center Drain | Acrylic
Soaking, Thermal Air, Whirlpool, & Combo
Deck-Mount
As Shown: Whirlpool option w/ standard 8 jets



AMBER

STON COLLECTION

66"L x 38"W x 23"D | 74"L x 45"W x 23"D
Center Drain | Hydroluxe SS™
Soaking, Thermal Air, Whirlpool, & Combo
Includes Armrest
Deck-Mount Only
As Shown 7445: Whirlpool option w/ standard 8 jets



 Edge Profile

ANGEL - CD

DESIGNER COLLECTION

66" L x 42" W x 22" D | 72" L x 42" W x 22" D

Side-Center Drain | Acrylic

Soaking, Thermal Air, Whirlpool, & Combo

Deck-Mount Only

As Shown 7242: Whirlpool option w/ standard 8 jets



ANGEL - ED

DESIGNER COLLECTION

72"L x 42"W x 22"D | End Drain | Acrylic
Soaking, Thermal Air, Whirlpool, & Combo
Deck-Mount Only
As Shown: Whirlpool option w/ standard 8 jets



Edge Profile



ASHLEY

DESIGNER COLLECTION

60"L x 48"W x 18"D | 72"L x 48"W x 18"D
End Drain | Acrylic
Soaking, Thermal Air, Whirlpool, & Combo
Includes Armrests & Pillows
Deck-Mount or Under-Mount
As Shown 7248: Whirlpool option w/ standard 8 jets



ATLANDIA

DESIGNER COLLECTION

74"L x 48"W x 21"D | End Drain | Acrylic
Soaking, Thermal Air, Whirlpool, & Combo
Includes Armrests & Pillows
Deck-Mount Only
As Shown: Whirlpool option w/ standard 8 jets



Edge Profile



AUBURN

METRO COLLECTION

80"L x 43"W x 20"D | 80"L x 66"W x 20"D
Center Drain | Hydroluxe SS™
Soaking & Thermal Air
Under-Mount Only



Auburn



CARIBE

DESIGNER COLLECTION

72"L x 36"W x 19"D | Center Drain | Gelcoat
Soaking, Thermal Air, Whirlpool, & Combo
Deck-Mount or Under-Mount
As Shown: Whirlpool option w/ standard 8 jets



CARLI

DESIGNER COLLECTION

60"L x 36"W x 19"D | End Drain | Acrylic
66"L x 36"W x 25"D | Center Drain | Acrylic
72"L x 40"W x 26"D | End Drain | Acrylic
Soaking, Thermal Air, Whirlpool, & Combo
Deck-Mount Only
As Shown 6036: Whirlpool option w/ standard 6 jets

Edge Profile



Carli



CARRERA

STON COLLECTION

60" L x 32" W x 23" D | 66" L x 34" W x 23" D
72" L x 36" W x 23" D

Center Drain | Hydroluxe SS™

Soaking, Thermal Air, Whirlpool, & Combo

Deck-Mount or Under-Mount

As Shown 7236: Whirlpool option w/ standard 8 jets



CASSI

DESIGNER COLLECTION

60" L x 42" W x 24" D

End Drain | Acrylic

Soaking, Thermal Air, Whirlpool, & Combo

Includes Armrests

Deck-Mount Only

As Shown: Whirlpool option w/ standard 6 jets



Edge Profile



CHARLOTTE

DESIGNER COLLECTION

72" L x 36" W x 19" D | End Drain | Acrylic

Soaking, Thermal Air, Whirlpool, & Combo

Includes Armrests

Deck-Mount or Under-Mount

As Shown: Whirlpool option w/ standard 6 jets



CITRINE

STON COLLECTION

59" L x 32" W x 21" D

Left or Right Hand End Drain | Hydroluxe SS

Soaking, Thermal Air, Whirlpool, & Combo

Alcove w/ Integral Seamless Skirt and Tile Flanges

As shown: Right hand drain below, left hand drain above

Whirlpool w/ standard 6 jets



CLARISSA

DESIGNER COLLECTION

55"L x 55"W x 21"D | Side-Center Drain | Acrylic
Soaking, Thermal Air, Whirlpool, & Combo
Includes Armrests
Deck-Mount Only
As Shown: Whirlpool option w/ standard 6 jets



Coal w/ Linear Overflow



COAL

STON COLLECTION

60"L x 32"W x 23"D | 66"L x 32"W x 23"D
End Drain | Hydroluxe SS™
Soaking, Thermal Air, Whirlpool, & Combo
Deck-Mount or Under-Mount
As Shown: Whirlpool option w/ standard 6 jets



CORAL

STON COLLECTION

66"Diameter x 19"D | End Drain | Hydroluxe SS™
72"Diameter x 23"D | Center Drain | Hydroluxe SS™
Soaking, Thermal Air, Whirlpool, & Combo
Deck-Mount or Under-Mount
As Shown 7223: Whirlpool option w/ standard 8 jets



CORAZON

STON COLLECTION

66" L x 45" W x 19" D | 74" L x 44" W x 19" D | Side-Center Drain
 74" L x 45" W x 21" D | Center Drain | Hydroluxe SS™
 Soaking, Thermal Air, Whirlpool, & Combo
 Deck-Mount Only
 As Shown 7444: Whirlpool option w/ standard 8 jets



Tile Flange

COURTNEY

DESIGNER COLLECTION

60" L x 48" W x 21" D | End Drain | Acrylic
 Soaking, Thermal Air, Whirlpool, & Combo
 Includes Integral Tile Flange
 Available in Right and Left Hand Drain Models
 Deck-Mount Only
 As Shown: Whirlpool option w/ standard 6 jets



CRYSTAL

STON COLLECTION

62" L x 43" W x 20" D | 70" L x 46" W x 21" D | End Drain
 78" L x 44" W x 20" D | Center Drain
 80" L x 53" W x 20" D | End Drain
 Hydroluxe SS™ | Soaking, Thermal Air, Whirlpool, & Combo
 Deck-Mount Only. Includes Armrests
 As Shown 6243: Whirlpool option w/ standard 6 jets



Edge Profile

DANIKA

DESIGNER COLLECTION

73" L x 41" W x 21" D | Side-Center Drain | Acrylic
 Soaking, Thermal Air, Whirlpool, & Combo
 Deck-Mount Only
 As Shown: Whirlpool option w/ standard 8 jets



Edge Profile

DEANNA

DESIGNER COLLECTION

60" L x 36" W x 22" D | 60" L x 40" W x 22" D

End Drain | Acrylic

Soaking, Thermal Air, Whirlpool, & Combo

Includes Armrests

Deck-Mount Only

As Shown: Whirlpool option w/ standard 6 jets



Edge Profile

DEBRA

DESIGNER COLLECTION

72" L x 42" W x 21" D | Side-Center Drain | Acrylic

Soaking, Thermal Air, Whirlpool, & Combo

Includes Armrests

Deck-Mount Only

As Shown: Whirlpool option w/ standard 8 jets



DUO

DESIGNER COLLECTION

60" L x 48" W x 18" D | 66" L x 42" W x 19" D

66" L x 48" W x 19" D | 72" L x 48" W x 19" D

End Drain | Acrylic

Soaking, Thermal Air, Whirlpool, & Combo

Includes Armrests & Pillows | Deck-Mount or Under-Mount

As Shown 6642, 6648, or 7248: Whirlpool option w/ standard 8 jets



ECLIPSE

DESIGNER COLLECTION

64" L x 64" W x 21" D | Right-Hand End Drain Only | Acrylic

Soaking, Thermal Air, Whirlpool, & Combo

Includes Pillow

Deck-Mount Only

As Shown: Whirlpool option w/ standard 6 jets



EILEEN

DESIGNER COLLECTION

74" L x 38" W x 19" D | 86" L x 50" W x 19" D

Side-Center Drain | Acrylic

Soaking, Thermal Air, Whirlpool, & Combo

Deck-Mount or Under-Mount

As Shown 7438: Whirlpool option w/ standard 8 jets



ELLE

DESIGNER COLLECTION

66" L x 32" W x 19" D | 72" L x 36" W x 19" D

Center Drain | Acrylic

Soaking, Thermal Air, Whirlpool, & Combo

Deck-Mount or Under-Mount

As Shown: Whirlpool option w/ standard 6 jets



EMERALD

STON COLLECTION

65" L x 36" W x 22" D | 72" L x 42" W x 24" D

Center Drain | Hydroluxe SS™

Soaking, Thermal Air, Whirlpool, & Combo

Deck-Mount or Under-Mount

As Shown 7242: Whirlpool option w/ standard 8 jets



Emma w/ Linear Overflow



EMMA

DESIGNER COLLECTION

66" L x 42" W x 22" D | End Drain | Acrylic

Soaking, Thermal Air, Whirlpool, & Combo

Deck-Mount Only

As Shown: Whirlpool option w/ standard 8 jets



Tile Flange

ENTRE

DESIGNER COLLECTION

60" L x 32" W x 18" D | 66" L x 32" W x 18" D

Right or Left Hand End Drain | Gelcoat

Soaking, Thermal Air, Whirlpool, & Combo

Includes Armrests and Integral Tile Flanges

Deck-Mount Only

As Shown: Whirlpool option w/ standard 6 jets



ERICA

DESIGNER COLLECTION

60" L x 60" W x 24" D | Side-Center Drain | Acrylic

Soaking, Thermal Air, Whirlpool, & Combo

Includes Armrests

Deck-Mount Only

As Shown: Whirlpool option w/ standard 6 jets



EVANSPORT

DESIGNER COLLECTION

60" L x 42" W x 21" D | 72" L x 42" W x 21" D

Side-Center Drain | Acrylic

Soaking, Thermal Air, Whirlpool, & Combo

Includes Armrests | Deck-Mount or Under-Mount

As Shown: Whirlpool option w/ standard 8 jets



FANTASY

DESIGNER COLLECTION

60" L x 42" W x 21" D | 72" L x 42" W x 21" D

Side-Center Drain | Acrylic

Soaking, Thermal Air, Whirlpool, & Combo

Includes Pillows

Deck-Mount Only

As Shown 6042: Soaking Version

As Shown 7242: Whirlpool option w/ standard 8 jets



FUJI

DESIGNER COLLECTION

40" L x 40" W x 32" D | Side-Center Drain | Gel Coat

60" L x 40" W x 26" D | Center Drain | Acrylic

60" L x 40" W x 32" D | Center Drain | Gel Coat

Soaking, Thermal Air, Whirlpool, & Combo

Deck-Mount or Under-Mount

As Shown 4040: Whirlpool option w/ standard 6 jets

As Shown 6040: Whirlpool option w/ standard 8 jets



GALAXIE

DESIGNER COLLECTION

60" L x 38" W x 19" D | 66" L x 38" W x 19" D

66" L x 42" W x 19" D | 66" L x 44" W x 19" D

74" L x 44" W x 19" D | Side Center Drain | Acrylic

Soaking, Thermal Air, Whirlpool, & Combo

Deck-Mount Only

As Shown: Whirlpool option w/ standard 8 jets



Galaxie



GRANITE

STON COLLECTION

48" L x 30" W x 16" D | 54" L x 31" W x 16" D
 60" L x 30" W x 17" D | 60" L x 32" W x 19" D
 60" L x 36" W x 19" D | 60" L x 36" W x 22" D
 66" L x 36" W x 19" D | 66" L x 36" W x 22" D
 72" L x 36" W x 19" D

End-Drain | Hydroluxe SS™

Soaking, Thermal Air, Whirlpool, & Combo

Includes Armrests | Deck-Mount or Under-Mount

As Shown: Whirlpool option w/ standard 6 jets



ISABELLA

DESIGNER COLLECTION

60" L x 36" W x 19" D | 66" L x 36" W x 19" D
 72" L x 36" W x 19" D

End Drain | Acrylic

Soaking, Thermal Air, Whirlpool, & Combo

Includes Armrests & Soap Dishes

Deck-Mount or Under-Mount

As Shown: Whirlpool option w/ standard 6 jets



JENNIFER

DESIGNER COLLECTION

72" L x 48" W x 25" D | Side-Center Drain | Acrylic
 Soaking, Thermal Air, Whirlpool, & Combo

Includes Armrests

Deck-Mount Only

As Shown: Whirlpool option w/ standard 8 jets



JESSICA W/ SKIRT

DESIGNER COLLECTION

60" L x 48" W x 21" D | No Spout

72" L x 48" W x 21" D | Molded Spout

Side-Center Drain | Acrylic

Soaking, Thermal Air, Whirlpool, & Combo

Deck-Mount Only

As Shown: Whirlpool option w/ standard 8 jets



KATARINA

DESIGNER COLLECTION

69" L x 69" W x 26" D | End Drain | Acrylic

Soaking, Thermal Air, Whirlpool, & Combo

Deck-Mount Only

As Shown: Whirlpool option w/ standard 10 jets



Katarina



KAYLA

DESIGNER COLLECTION

74" L x 42" W x 22" D | Side-Center Drain | Acrylic
Soaking, Thermal Air, Whirlpool, & Combo
Deck-Mount or Under-Mount
As Shown: Whirlpool option w/ standard 8 jets



KIMBERLY

DESIGNER COLLECTION

66" L x 40" W x 24" D | 72" L x 40" W x 24" D
End Drain | Acrylic
Soaking, Thermal Air, Whirlpool, & Combo
Includes Armrests
Deck-Mount Only
As Shown: Whirlpool option w/ standard 6 jets



Edge Profile



KIRA

DESIGNER COLLECTION

60" L x 32" W x 20" D | 72" L x 32" W x 20" D
Side-Center Drain | Acrylic
Soaking, Thermal Air, Whirlpool, & Combo
Deck-Mount or Under-Mount
As Shown: Whirlpool option w/ standard 6 jets



KONA

STUDIO COLLECTION

60" L x 36" W x 15" D | 60" L x 42" W x 15" D
60" L x 42" W x 18" D | 60" L x 42" W x 20" D
Right or Left Hand End Drain | Gelcoat
Soaking or Whirlpool
Alcove w/ Integral Skirt & Tile Flanges
As Shown: Whirlpool option w/ standard 6 jets



Lacey w/ Whirlpool & LED-Chromatherapy

Block Sink



LACEY

DESIGNER COLLECTION

60" L x 30" W x 17" D | 60" L x 30" W x 20" D

60" L x 32" W x 17" D | 60" L x 32" W x 20" D

60" L x 36" W x 20" D | 60" L x 42" W x 20" D

63" L x 28" W x 20" D | 66" L x 30" W x 20" D

66" L x 32" W x 17" D | 66" L x 32" W x 20" D

66" L x 36" W x 20" D | 72" L x 32" W x 20" D

72" L x 36" W x 20" D | 72" L x 40" W x 20" D

End Drain | Acrylic

72" L x 54" W x 15" D | Center Drain | Acrylic

Soaking, Thermal Air, Whirlpool, & Combo

Deck-Mount or Under-Mount

As Shown: Whirlpool option w/ standard 6 jets



Lacey w/ 2-sided Seamless Skirt



Lacey w/ Linear Overflow



LARA

DESIGNER COLLECTION

60" L x 60" W x 19" D | Side-Center Drain | Acrylic
Soaking, Thermal Air, Whirlpool, & Combo
Includes Armrests and Soap Dishes
Deck-Mount Only
As Shown: Whirlpool option w/ standard 6 jets



LARGO

DESIGNER COLLECTION

82" L x 64" W x 19" D | Side-Center Drain | Gelcoat
Soaking, Thermal Air, Whirlpool, & Combo
Deck-Mount Only
As Shown: Whirlpool option w/ standard 8 jets



LILIANA

DESIGNER COLLECTION

66" L x 42" W x 23" D | Side-Center Drain | Acrylic
Choose Lip Height when Ordering
Soaking, Thermal Air, Whirlpool, & Combo
Deck-Mount or Under-Mount
As Shown: Whirlpool option w/ standard 8 jets



Edge Profile



LINDSEY

STUDIO COLLECTION

60" L x 30" W x 20" D | 60" L x 32" W x 20" D

60" L x 36" W x 20" D | 66" L x 32" W x 20" D

66" L x 36" W x 20" D | 72" L x 36" W x 20" D

End Drain | Acrylic

Soaking, Thermal Air, or Whirlpool

As Shown: Whirlpool option w/ standard 6 jets



Lindsey



Lorraine



LORRAINE

DESIGNER COLLECTION

60" L x 42" W x 22" D | 74" L x 44" W x 22" D

Side-Center Drain | Acrylic

Choose Lip Height when Ordering

Soaking, Thermal Air, Whirlpool, & Combo

Deck-Mount or Under-Mount

As Shown: Whirlpool option w/ standard 8 jets



Edge Profile



MAKYLA

DESIGNER COLLECTION

75" L x 48" W x 21" D | Side-Center Drain | Acrylic

Soaking, Thermal Air, Whirlpool, & Combo

Includes Armrests and Seats

Deck-Mount or Under-Mount

As Shown: Whirlpool option w/ standard 6 jets
& standard back masseuse system



MALIA

DESIGNER COLLECTION

60" L x 32" W x 21" D | 60" L x 42" W x 21" D

End Drain | Acrylic

Soaking, Thermal Air, Whirlpool, & Combo

Deck-Mount or Under-Mount

As Shown: Whirlpool option w/ standard 6 jets



MARIE

STUDIO COLLECTION

60" L x 42" W x 20" D

Right or Left Hand End Drain | Acrylic

Soaking, Thermal Air, & Whirlpool

Grab Bars Included

Alcove w/ Integral Skirt & Tile Flanges

As Shown: Whirlpool option w/ standard 6 jets



MARISSA

DESIGNER COLLECTION

70" L x 40" W x 25" D | Side-Center Drain | Acrylic
Soaking, Thermal Air, Whirlpool, & Combo
Deck-Mount Only
As Shown: Whirlpool option w/ standard 8 jets



MARLIE

DESIGNER COLLECTION

60" L x 30" W x 20" D | 60" L x 32" W x 20" D
60" L x 36" W x 20" D | 66" L x 32" W x 20" D
66" L x 36" W x 20" D
Hidden End Drain Cover | Acrylic
Soaking, Thermal Air, Whirlpool, & Combo
Deck-Mount or Under-Mount
As Shown: Whirlpool option w/ standard 6 jets



MELLENIE

DESIGNER COLLECTION

70" L x 36" W x 22" D | Side-Center Drain | Acrylic
Soaking, Thermal Air, or Whirlpool
Deck-Mount or Under-Mount
As Shown: Whirlpool option w/ standard 6 jets



MELISSA

DESIGNER COLLECTION

66" L x 36" W x 20" D | 72" L x 36" W x 20" D
End Drain | Acrylic
Soaking, Thermal Air, Whirlpool, & Combo
Deck-Mount or Under-Mount
As Shown: Whirlpool option w/ standard 6 jets



MONTEREY

DESIGNER COLLECTION

60" L x 42" W x 24" D | 72" L x 42" W x 24" D

Side-Center Drain | Acrylic

Soaking, Thermal Air, Whirlpool, & Combo

Includes Armrests

Deck-Mount or Under-Mount

As Shown: Whirlpool option w/ standard 8 jets



MYSTIQUE

DESIGNER COLLECTION

78" L x 44" W x 22" D | Side-Center Drain | Acrylic

Soaking, Thermal Air, Whirlpool, & Combo

Includes Armrests and Pillows

Deck-Mount Only

As Shown: Whirlpool option w/ standard 10 jets



Edge Profile



Edge Profile

NATALIE

DESIGNER COLLECTION

78"L x 44"W x 24"D | Side-Center Drain | Acrylic
Soaking, Thermal Air, Whirlpool, & Combo
Includes Armrests
Deck-Mount Only
As Shown: Whirlpool option w/ standard 8 jets



NATASHA

DESIGNER COLLECTION

66"L x 36"W x 21"D | 70"L x 36"W x 24"D
Center Drain | Acrylic
Soaking, Thermal Air, Whirlpool, & Combo
Deck-Mount Only
As Shown: Whirlpool option w/ standard 8 jets



NINA

DESIGNER COLLECTION

72"L x 44"W x 22"D | Side-Center Drain | Acrylic
Soaking, Thermal Air, Whirlpool, & Combo
Includes Armrests
Deck-Mount Only
As Shown: Whirlpool option w/ standard 8 jets



NOELLE

DESIGNER COLLECTION

70"L x 40"W x 24"D | Side-Center Drain | Acrylic
Soaking, Thermal Air, Whirlpool, & Combo
Deck-Mount or Under-Mount
As Shown: Whirlpool option w/ standard 8 jets



OVATION

DESIGNER COLLECTION

60" L x 42" W x 20" D | 66" L x 42" W x 21" D
 72" L x 42" W x 21" D | End Drain | Acrylic
 84" L x 42" W x 21" D | Center Drain | Gel Coat
 Soaking, Thermal Air, Whirlpool, & Combo
 Deck-Mount or Under-Mount

As Shown 6042, 6642, 7242: Whirlpool option w/ standard 6 jets



PALMER

DESIGNER COLLECTION

66" L x 36" W x 21" D | 70" L x 36" W x 21" D
 Side-Center Drain | Acrylic
 Soaking, Thermal Air, Whirlpool, & Combo
 Deck-Mount or Under-Mount

As Shown: Whirlpool option w/ standard 8 jets



PENTHOUSE

DESIGNER COLLECTION

72"L x 60"W x 20"D | Center Drain | Gelcoat
Soaking, Thermal Air, Whirlpool, & Combo
Includes Armrests and Pillows
Deck-Mount or Under-Mount
As Shown: Whirlpool option w/ standard 8 jets



PREMIER

DESIGNER COLLECTION

72"L x 36"W x 20"D | 74"L x 42"W x 20"D
75"L x 47"W x 20"D
End Drain | Acrylic
Soaking, Thermal Air, Whirlpool, & Combo
Includes Pillow | Deck-Mount or Under-Mount
As Shown: Whirlpool option w/ standard 8 jets



QUARTZ

STON COLLECTION

63"L x 33"W x 21"D | End Drain | Hydroluxe SS™
Soaking, Thermal Air, Whirlpool, & Combo
Includes Armrests
Deck-Mount Only
As Shown: Whirlpool option w/ standard 6 jets



RACHAEL

DESIGNER COLLECTION

66"L x 36"W x 20"D | 72"L x 36"W x 20"D
Side-Center Drain | Acrylic
Soaking, Thermal Air, Whirlpool, & Combo
Deck-Mount or Under-Mount
As Shown 6636: Whirlpool option w/ standard 6 jets



REDONDO

DESIGNER COLLECTION

60" Diameter x 20" D | 69" Diameter x 18" D

Side Drain | Acrylic

Soaking, Thermal Air, Whirlpool, & Combo

Deck-Mount or Under-Mount

As Shown 6918: Whirlpool option w/ standard 8 jets



Redondo w/ LED-Chromatherapy



REGAL

DESIGNER COLLECTION

70" L x 43" W x 19" D | 71" L x 34" W x 19" D

End Drain | Gelcoat

Soaking, Thermal Air, Whirlpool, & Combo

Includes Pillow

Deck-Mount or Under-Mount

As Shown: Whirlpool option w/ standard 6 jets



Regan w/ Micro Mount & Skirt Removed



REGAN

STUDIO COLLECTION

54" L x 36" W x 18" D - No Flange on Skirt, Offset Drain
60" L x 32" W x 18" D | 60" L x 36" W x 18" D
66" L x 32" W x 15" D | 66" L x 32" W x 18" D
72" L x 32" W x 20" D

Right or Left Hand End Drain | Acrylic
Soaking, Thermal Air, & Whirlpool
Includes Integral Skirt & Tile Flanges | Alcove

As Shown:

(Top) Left Hand Drain, Whirlpool option w/ standard 6 jets

(Bottom) Right Hand Drain, Skirt View



Edge Profile

RILEY

DESIGNER COLLECTION

60" L x 42" W x 20" D | 66" L x 42" W x 21" D
72" L x 42" W x 21" D | End Drain | Acrylic

Soaking, Thermal Air, Whirlpool, & Combo

Includes Armrests

Deck-Mount Only

As Shown: Whirlpool option w/ standard 6 jets



RINCON

DESIGNER COLLECTION

59" L x 59" W x 21" D | Side-Center Drain | Acrylic
Soaking, Thermal Air, Whirlpool, & Combo
Includes Seat
Deck-Mount Only
As Shown: Whirlpool option w/ standard 6 jets



ROSEMARIE

DESIGNER COLLECTION

60" L x 32" W x 18" D | End Drain | Acrylic
Soaking, Thermal Air, Whirlpool, & Combo
Deck-Mount or Under-Mount
As Shown: Whirlpool option w/ standard 6 jets



RUBY

STON COLLECTION

60" L x 36" W x 19" D | 60" L x 42" W x 16" D
60" L x 42" W x 19" D | 72" L x 36" W x 16" D
73" L x 42" W x 19" D | End Drain | Hydroluxe SS™
Soaking, Thermal Air, Whirlpool, & Combo
Deck-Mount or Under-Mount
As Shown: Whirlpool option w/ standard 6 jets



SAPPHIRE

STON COLLECTION

41" L x 28" W x 20" D | End Drain | Hydroluxe SS™
Soaking, Thermal Air, Whirlpool, & Combo
Deck-Mount Only
As Shown: Whirlpool option w/ standard 6 jets



Savannah w/ Micro Mount, Whirlpool & Back Masseuse



SAVANNAH

DESIGNER COLLECTION

66" L x 44" W x 24" D | 74" L x 44" W x 24" D

Side-Center Drain | Acrylic

Soaking, Thermal Air, Whirlpool, & Combo

Includes Armrests | Deck-Mount or Under-Mount

As Shown: Whirlpool option w/ standard 3 swirling jets on each back & 2 directional jets on each long side



SHANNON

STUDIO COLLECTION

60" L x 30" W x 20" D | 60" L x 32" W x 20" D

66" L x 32" W x 20" D |

Right or Left Hand End Drain | Acrylic

Soaking, Thermal Air, & Whirlpool

Includes Seamless Integral Skirt & Tile Flanges

Alcove | As Shown LH: Whirlpool option w/ standard 6 jets



SOLITUDE

DESIGNER COLLECTION

60" L x 30" W x 20" D | End Drain | Acrylic

Soaking, Thermal Air, Whirlpool, & Combo

Deck-Mount or Under-Mount

As Shown: Whirlpool option w/ standard 6 jets



Solo w/ Whirlpool,
Back & Neck Masseuse



SOLO

DESIGNER COLLECTION

54" L x 30" W x 19" D | 60" L x 32" W x 19" D

60" L x 36" W x 19" D | 66" L x 30" W x 19" D

66" L x 34" W x 19" D | 72" L x 36" W x 19" D

End Drain | Acrylic

Soaking, Thermal Air, Whirlpool, & Combo

Includes Armrests | Deck-Mount or Under-Mount

As Shown: Whirlpool option w/ standard 6 jets



STELLA

DESIGNER COLLECTION

70" L x 36" W x 19" D | Center Drain | Acrylic

Soaking, Thermal Air, Whirlpool, & Combo

Deck-Mount or Under-Mount

As Shown: Whirlpool option w/ standard 8 jets



STUDIO 5959

STUDIO COLLECTION

59"L x 59"W x 21"D | Side-Center Drain | Acrylic
Soaking, Thermal Air, & Whirlpool

Includes Seat

Deck-Mount Only

As Shown: Whirlpool option w/ standard 6 jets



STUDIO 6032

STUDIO COLLECTION

60"L x 32"W x 19"D | End Drain | Acrylic
Soaking, Thermal Air, & Whirlpool

Includes Armrests, Available with or without Grab Bars

Deck-Mount or Under-Mount

As Shown: Whirlpool option w/ standard 6 jets



STUDIO 6036

STUDIO COLLECTION

60"L x 36"W x 19"D | End Drain | Acrylic
Soaking, Thermal Air, & Whirlpool

Includes Armrests

Deck-Mount or Under-Mount

As Shown: Whirlpool option w/ standard 6 jets



STUDIO 6042

STUDIO COLLECTION

60"L x 42"W x 20"D | End Drain | Acrylic
Soaking, Thermal Air, & Whirlpool

Includes Clear Acrylic Grab Bars

Deck-Mount or Under-Mount

As Shown: Whirlpool option w/ standard 6 jets



STUDIO 7236

STUDIO COLLECTION

72"L x 36"W x 19"D | End Drain | Acrylic

Soaking, Thermal Air, & Whirlpool

Includes Armrests

Deck-Mount or Under-Mount

As Shown: Whirlpool option w/ standard 6 jets



STUDIO 7242

STUDIO COLLECTION

72"L x 42"W x 20"D | End Drain | Acrylic

Soaking, Thermal Air, & Whirlpool

Deck-Mount or Under-Mount

As Shown: Whirlpool option w/ standard 6 jets



STUDIO DUAL OVAL

STUDIO COLLECTION

66"L x 44"W x 19"D | 74"L x 44"W x 19"D

Side-Center Drain | Acrylic

Soaking, Thermal Air, & Whirlpool

Deck-Mount Only

As Shown: Whirlpool option w/ standard 6 jets



STUDIO HOURGLASS

STUDIO COLLECTION

60"L x 42"W x 21"D | 72"L x 42"W x 21"D

Side-Center Drain | Acrylic

Soaking, Thermal Air, & Whirlpool

Includes Armrests | Deck-Mount or Under-Mount

As Shown: Whirlpool option w/ standard 6 jets



STUDIO OVAL

STUDIO COLLECTION

60" L x 42" W x 20" D | 66" L x 42" W x 21" D
72" L x 42" W x 21" D | End Drain | Acrylic
Soaking, Thermal Air, & Whirlpool
Includes Armrests
Deck-Mount Only
As Shown: Whirlpool option w/ standard 6 jets



SYLVIA

DESIGNER COLLECTION

60" L x 38" W x 22" D | 66" L x 38" W x 22" D
66" L x 42" W x 24" D | Side-Center Drain | Acrylic
Soaking, Thermal Air, Whirlpool, & Combo
Deck-Mount Only
As Shown 6638 & 6642: Whirlpool option w/ standard 8 jets



Edge Profile



SYDNEY

DESIGNER COLLECTION

60" L x 30" W x 17" D | 60" L x 30" W x 20" D
60" L x 32" W x 17" D | 60" L x 32" W x 20" D
60" L x 34" W x 20" D | 60" L x 36" W x 20" D
66" L x 32" W x 20" D | 72" L x 32" W x 20" D
72" L x 36" W x 20" D | 72" L x 40" W x 20" D
Left or Right Hand End Drain | Acrylic
Soaking, Thermal Air, Whirlpool, & Combo
Alcove w/ Integral Seamless Skirt and Tile Flanges
As Shown: Left Hand Drain, Whirlpool option w/ standard 6 jets





Sydney w/ Linear Overflow



TOPAZ

STON COLLECTION

69" L x 48" W x 20" D | 74" L x 45" W x 24" D

Center Drain | Hydroluxe SS™

Soaking, Thermal Air, Whirlpool, & Combo

Includes Armrests

Deck-Mount Only

As Shown 7445: Whirlpool option w/ standard 8 jets



VANESSA

DESIGNER COLLECTION

72" L x 42" W x 21" D | End Drain | Acrylic

Soaking, Thermal Air, Whirlpool, & Combo

Includes Armrests

Deck-Mount Only

As Shown: Whirlpool option w/ standard 6 jets



Edge Profile



Versailles w/ 4-sided Seamless Skirt



VERSAILLES

DESIGNER COLLECTION

66" L x 36" W x 20" D | 72" L x 36" W x 20" D

72" L x 42" W x 20" D

Hidden Center Drain Cover | Acrylic

Soaking, Thermal Air, Whirlpool, & Combo

Deck-Mount or Under-Mount

As Shown: Whirlpool option w/ standard 8 jets



VICTORIA

DESIGNER COLLECTION

73" L x 48" W x 24" D | Side-Center Drain | Acrylic

Soaking, Thermal Air, Whirlpool, & Combo

Deck-Mount or Under-Mount

As Shown: Whirlpool option w/ standard 8 jets



WHITNEY

DESIGNER COLLECTION

62" L x 62" W x 21" D | Center Drain | Acrylic

Soaking, Thermal Air, Whirlpool, & Combo

Includes Seat and 4 Clear Acrylic Grab Bars

Deck-Mount Only

As Shown: Whirlpool option w/ standard 6 jets



YVETTE

DESIGNER COLLECTION

72" L x 42" W x 21" D | Side Center Drain | Acrylic

Soaking, Thermal Air, Whirlpool, & Combo

Includes Armrests

Deck-Mount Only

As Shown: Whirlpool option w/ standard 8 jets



Edge Profile

DROP-IN & ALCOVE COLLECTION SPECIFICATIONS

MODEL NAME & OUTSIDE DIMENSIONS (length X width X depth)	TUB MATERIAL*	JETS	BACKREST SLOPE	THERMAL AIR	UNDERMOUNT	FREE-STANDING	SKIRT	TILE FLANGE	LINEAR DRAIN	MICRO MOUNT	HYDRO BLANKET	LED CHROMA-THERAPY	DUAL COLORS	GRAB BARS	REMOTE CONTROL
Aimee 72 X 36 X 24	A	6	32°	•					•	•	•	•		•	•
Alexis 60 X 48 X 20	A	8	27°	•	•	•	•	•	•	•	•	•	•	•	•
Alyssa 66 X 42 X 20	A	6	23°	•					•		•	•		•	•
Alyssa 78 X 48 X 20	A	8	23°	•					•		•	•		•	•
Amber 66 X 38 X 23	SS	6	25°	•					•	•		•		•	•
Amber 74 X 45 X 23	SS	8	25°	•					•	•		•		•	•
Angel 66 X 42 X 22	A	6	24°	•					•		•	•		•	•
Angel 72 X 42 X 22	A	8	25°	•					•		•	•		•	•
Angel 72 X 42 X 22 ED	A	8	24°	•					•		•	•		•	•
Ashley 60 X 48 X 18	A	6	14°	•	•	•	•	•	•	•	•	•	•	•	•
Ashley 72 X 48 X 18	A	8	14°	•	•	•	•	•	•	•	•	•	•	•	•
Atlandia 74 X 48 X 21	A	8	25°	•					•		•	•		•	•
Auburn 80 X 43 X 20	SS		28°	•											•
Auburn 80 X 66 X 20	SS		28°	•											•
Caribe 72 X 36 X 19	G	6	18°	•	•		•		•	•	•	•		•	•
Carli 60 X 36 X 19	A	6	23°	•					•		•	•		•	•
Carli 66 X 36 X 25	A	6	30°	•					•		•	•		•	•
Carli 70 X 40 X 27	A	6	40°	•					•		•	•		•	•
Carrera 60 X 32 X 23	SS	6	24°	•	•	•	•	•	•	•		•	•	•	•
Carrera 66 X 34 X 23	SS	6	24°	•	•	•	•	•	•	•	•	•	•	•	•
Carrera 72 X 36 X 23	SS	8	24°	•	•	•	•	•	•	•	•	•	•	•	•
Cassi 60 X 42 X 26	A	6	21°	•					•		•	•		•	•
Charlotte 72 X 36 X 20	A	6	21°	•		•	•	•	•		•	•	•	•	•
Clarissa 55 X 55 X 21	A	6	18°	•				•	•		•	•		•	•
Coal 60 X 32 X 23	SS	6	28°	•	•	•	•	•	•	•		•	•	•	•
Coal 66 X 32 X 23	SS	6	28°	•	•	•	•	•	•	•		•	•	•	•
Corazon 66 X 45 X 19	SS	6	31°	•					•	•		•		•	•
Corazon 74 X 44 X 19	SS	8	31°	•					•	•		•		•	•
Corazon 74 X 45 X 21	SS	8	31°	•					•	•		•		•	•
Courtney 60 X 48 X 21	A	6	26°	•			•	•	•	•	•	•		•	•
Crystal 62 X 43 X 20	SS	6	27°	•	•				•	•		•		•	•
Crystal 70 X 46 X 21	SS	6	27°	•	•				•	•		•		•	•
Crystal 78 X 44 X 20	SS	8	27°	•	•				•	•		•		•	•
Crystal 80 X 53 X 20	SS	8	27°	•	•				•	•		•		•	•
Crystal 83 X 48 X 20	SS	8	27°	•	•				•	•		•		•	•
Crystal 84 X 48 X 21	SS	8	27°	•	•				•	•		•		•	•
Danika 73 X 41 X 21	A	8	20°	•					•		•	•		•	•

* A = ACRYLIC G = GEL COAT SS = HYDROLUXE SS™
 OPTIONS IN RED ARE STANDARD WITH TUB

MODEL NAME & OUTSIDE DIMENSIONS (length X width X depth)	TUB MATERIAL*	JETS	BACKREST SLOPE	THERMAL AIR	UNDERMOUNT	FREE-STANDING	SKIRT	TILE FLANGE	LINEAR DRAIN	MICRO MOUNT	HYDRO BLANKET	LED CHROMA-THERAPY	DUAL COLORS	GRAB BARS	REMOTE CONTROL
Deanna 60 X 36 X 22	A	6	31°	•					•		•	•		•	•
Deanna 60 X 40 X 22	A	6	31°	•					•		•	•		•	•
Debra 72 X 42 X 21	A	8	26°	•					•		•	•		•	•
Duo 60 X 48 X 18	A	6	26°	•	•	•	•	•	•	•	•	•	•	•	•
Duo 66 X 42 X 19	A	8	26°	•	•	•	•	•	•	•	•	•	•	•	•
Duo 66 X 48 X 19	A	8	26°	•	•	•	•	•	•	•	•	•	•	•	•
Duo 72 X 48 X 19	A	8	28°	•	•	•	•	•	•	•	•	•	•	•	•
Eclipse 64 X 64 X 21	A	6	28°	•				•	•		•	•		•	•
Eileen 74 X 38 X 19	A	8	26°	•	•	•	•	•	•	•	•	•	•	•	•
Eileen 86 X 50 X 19	A	10	35°	•	•	•	•	•	•	•	•	•	•	•	•
Elle 66 X 32 X 19	A	6	35°	•	•				•	•	•	•		•	•
Elle 72 X 36 X 19	A	6	35°	•	•				•	•	•	•		•	•
Emerald 65 X 36 X 21	SS	6	30°	•	•				•	•		•		•	•
Emerald 72 X 42 X 24	SS	8	28°	•	•				•	•		•		•	•
Emma 66 X 42 X 22	A	8	22°	•					•		•	•		•	•
Entré 60 X 32 X 18	G	6	34°	•			•	•	•		•	•		•	•
Entré 66 X 32 X 18	G	6	34°	•			•	•	•		•	•		•	•
Erica 60 X 60 X 24	A	6	13°	•			•	•	•	•	•	•		•	•
Evansport 60 X 42 X 21	A	8	26°	•	•	•	•	•	•	•	•	•	•	•	•
Evansport 72 X 42 X 21	A	8	26°	•	•	•	•	•	•	•	•	•	•	•	•
Fantasy 60 X 42 X 21	A	6	24°	•		•	•	•	•	•	•	•	•	•	•
Fantasy 72 X 42 X 21	A	8	24°	•		•	•	•	•	•	•	•	•	•	•
Fuji 40 X 40 X 32	G	6	6°	•	•				•	•	•	•		•	•
Fuji 60 X 40 X 26	A	8	11°	•	•			•	•	•	•	•		•	•
Fuji 60 X 40 X 32	G	8	11°	•	•				•	•	•	•		•	•
Galaxie 60 X 38 X 19	A	6	27°	•					•	•	•	•		•	•
Galaxie 66 X 38 X 19	A	8	27°	•					•	•	•	•		•	•
Galaxie 66 X 42 X 19	A	8	29°	•					•	•	•	•		•	•
Galaxie 66 X 44 X 19	A	8	28°	•					•	•	•	•		•	•
Galaxie 74 X 44 X 19	A	8	31°	•					•	•	•	•		•	•
Granite 48 X 30 X 16	SS	6	25°	•	•		•	•	•	•		•		•	•
Granite 54 X 31 X 16	SS	6	25°	•	•		•	•	•	•		•		•	•
Granite 60 X 30 X 17	SS	6	30°	•	•		•	•	•	•		•		•	•
Granite 60 X 32 X 19	SS	6	30°	•	•		•	•	•	•		•		•	•
Granite 60 X 36 X 19	SS	6	30°	•	•		•	•	•	•		•		•	•
Granite 60 X 36 X 22	SS	6	32°	•	•		•	•	•	•		•		•	•
Granite 66 X 36 X 19	SS	6	30°	•	•		•	•	•	•		•		•	•

MODEL NAME & OUTSIDE DIMENSIONS (length X width X depth)	TUB MATERIAL*	JETS	BACKREST SLOPE	THERMAL AIR	UNDERMOUNT	FREE-STANDING	SKIRT	TILE FLANGE	LINEAR DRAIN	MICRO MOUNT	HYDRO BLANKET	LED CHROMA-THERAPY	DUAL COLORS	GRAB BARS	REMOTE CONTROL
Granite 66 X 36 X 22	SS	6	32°	•	•		•	•	•	•		•		•	•
Granite 72 X 36 X 19	SS	6	30°	•	•		•	•	•	•		•		•	•
Isabella 60 X 36 X 19	A	6	36°	•	•	•	•	•	•	•	•	•	•	•	•
Isabella 66 X 36 X 19	A	6	36°	•	•	•	•	•	•	•	•	•	•	•	•
Isabella 72 X 36 X 19	A	6	36°	•	•	•	•	•	•	•	•	•	•	•	•
Jennifer 72 X 48 X 26	A	8	29°	•				•	•		•	•		•	•
Jessica 60 X 48 X 21	A	8	20°	•			•	•	•		•	•		•	•
Jessica 72 X 48 X 21	A	8	20°	•			•	•	•		•	•		•	•
Katarina 69 X 69 X 26	A	10	20°	•				•	•	•	•	•		•	•
Kayla 74 X 42 X 22	A	8	26°	•	•	•	•	•	•	•	•	•	•	•	•
Kimberly 66 X 40 X 24	A	6	36°	•					•		•	•		•	•
Kimberly 72 X 40 X 24	A	6	39°	•					•		•	•		•	•
Kira 60 X 32 X 20	A	6	27°	•	•	•	•	•	•	•	•	•	•	•	•
Kira 72 X 32 X 20	A	6	26°	•	•	•	•	•	•	•	•	•	•	•	•
Kona 60 X 42 X 15	G	6	16°				•	•							
Kona 60 X 42 X 18	G	6	16°		•		•	•							
Kona 60 X 42 X 20	G	6	16°		•		•	•							
Kona 60 X 36 X 15	G	6	16°		•		•	•							
Lacey 60 X 30 X 17	A	6	28°	•	•	•	•	•	•	•	•	•	•	•	•
Lacey 60 X 30 X 20	A	6	28°	•	•	•	•	•	•	•	•	•	•	•	•
Lacey 60 X 32 X 17	A	6	28°	•	•	•	•	•	•	•	•	•	•	•	•
Lacey 60 X 32 X 20	A	6	28°	•	•	•	•	•	•	•	•	•	•	•	•
Lacey 60 X 36 X 20	A	6	28°	•	•	•	•	•	•	•	•	•	•	•	•
Lacey 60 X 42 X 20	A	6	28°	•	•	•	•	•	•	•	•	•	•	•	•
Lacey 63 X 28 X 20	A	6	28°	•	•	•	•	•	•	•	•	•	•	•	•
Lacey 66 X 30 X 20	A	6	28°	•	•	•	•	•	•	•	•	•	•	•	•
Lacey 66 X 32 X 17	A	6	28°	•	•	•	•	•	•	•	•	•	•	•	•
Lacey 66 X 32 X 20	A	6	28°	•	•	•	•	•	•	•	•	•	•	•	•
Lacey 66 X 36 X 20	A	6	28°	•	•	•	•	•	•	•	•	•	•	•	•
Lacey 72 X 32 X 20	A	6	28°	•	•	•	•	•	•	•	•	•	•	•	•
Lacey 72 X 36 X 20	A	6	28°	•	•	•	•	•	•	•	•	•	•	•	•
Lacey 72 X 40 X 20	A	6	28°	•	•	•	•	•	•	•	•	•	•	•	•
Lacey 72 X 54 X 15	A	8	25°	•	•	•	•	•	•	•	•	•	•	•	•
Lara 60 X 60 X 19	A	6	28°	•				•	•	•	•	•		•	•
Largo 82 X 64 X 19	G	8	30°	•					•	•	•	•		•	•
Liliana 66 X 42 X 23	A	8	20°	•	•				•	•	•	•		•	•
Lindsey 60 X 30 X 20	A	6	28°	•	•		•	•							

* A = ACRYLIC G = GEL COAT SS = HYDROLUXE SS™
 OPTIONS IN RED ARE STANDARD WITH TUB

MODEL NAME & OUTSIDE DIMENSIONS (length X width X depth)	TUB MATERIAL*	JETS	BACKREST SLOPE	THERMAL AIR	UNDERMOUNT	FREE-STANDING	SKIRT	TILE FLANGE	LINEAR DRAIN	MICRO MOUNT	HYDRO BLANKET	LED CHROMA-THERAPY	DUAL COLORS	GRAB BARS	REMOTE CONTROL
Lindsey 60 X 32 X 20	A	6	28°	•	•		•	•							
Lindsey 60 X 36 X 20	A	6	28°	•	•		•	•							
Lindsey 66 X 32 X 20	A	6	28°	•	•		•	•							
Lindsey 66 X 36 X 20	A	6	28°	•	•		•	•							
Lindsey 72 X 36 X 20	A	6	28°	•	•		•	•							
Lorraine 60 X 42 X 22	A	8	22°	•	•				•	•	•	•		•	•
Lorraine 74 X 44 X 22	A	8	25°	•	•				•	•	•	•		•	•
Makyla 75 X 48 X 21	A	8	17° & 8°	•	•			•	•	•	•	•		•	•
Malia 60 X 32 X 21	A	6	25°	•	•				•	•	•	•		•	•
Malia 60 X 42 X 21	A	6	25°	•	•				•	•	•	•		•	•
Marie 60 X 42 X 20	A	6	34°	•			•	•							
Marissa 70 X 40 X 25	A	6	30°	•					•	•	•	•		•	•
Marlie 60 X 30 X 20	A	6	26°	•	•	•	•	•	•	•	•	•	•	•	•
Marlie 60 X 32 X 20	A	6	26°	•	•	•	•	•	•	•	•	•	•	•	•
Marlie 60 X 36 X 20	A	6	26°	•	•	•	•	•	•	•	•	•	•	•	•
Marlie 66 X 32 X 20	A	6	26°	•	•	•	•	•	•	•	•	•	•	•	•
Marlie 66 X 36 X 20	A	6	26°	•	•	•	•	•	•	•	•	•	•	•	•
Mellenie 72 X 36 X 22	A	6	23°	•	•			•	•	•	•	•		•	•
Melissa 66 X 36 X 20	A	6	28°	•	•	•	•	•	•	•	•	•	•	•	•
Melissa 72 X 36 X 20	A	8	28°	•	•	•	•	•	•	•	•	•	•	•	•
Monterey 60 X 42 X 24	A	8	25°	•	•			•	•	•	•	•		•	•
Monterey 72 X 42 X 24	A	8	25°	•	•			•	•	•	•	•		•	•
Mystique 78 X 44 X 22	A	10	17°	•					•		•	•		•	•
Natalie 78 X 44 X 24	A	8	41°	•					•		•	•		•	•
Natasha 66 X 36 X 21	A	8	30°	•					•	•	•	•		•	•
Natasha 70 X 36 X 24	A	8	30°	•					•	•	•	•		•	•
Nina 72 X 44 X 22	A	8	30°	•	•				•	•	•	•		•	•
Noelle 70 X 40 X 24	A	8	30°	•	•				•	•	•	•		•	•
Ovation 60 X 42 X 20	A	6	35°	•	•			•	•	•	•	•		•	•
Ovation 66 X 42 X 21	A	6	36°	•	•			•	•	•	•	•		•	•
Ovation 72 X 42 X 21	A	6	34°	•	•			•	•	•	•	•		•	•
Ovation 84 X 42 X 24	G	8	31°	•	•				•	•	•	•		•	•
Palmer 66 X 36 X 22	A	8	21°	•	•				•	•	•	•		•	•
Palmer 70 X 36 X 22	A	8	23°	•	•				•	•	•	•		•	•
Penthouse 72 X 60 X 20	G	8	38°	•	•		•		•	•	•	•		•	•
Premier 72 X 36 X 19	A	8	37°	•	•	•	•	•	•	•	•	•	•	•	•
Premier 74 X 42 X 19	A	8	56°	•	•	•	•	•	•	•	•	•	•	•	•

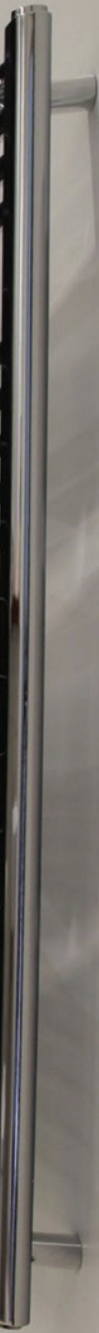
MODEL NAME & OUTSIDE DIMENSIONS (length X width X depth)	TUB MATERIAL*	JETS	BACKREST SLOPE	THERMAL AIR	UNDERMOUNT	FREE-STANDING	SKIRT	TILE FLANGE	LINEAR DRAIN	MICRO MOUNT	HYDRO BLANKET	LED CHROMA-THERAPY	DUAL COLORS	GRAB BARS	REMOTE CONTROL
Premier 75 X 47 X 19	A	8	59°	•	•	•	•	•	•	•	•	•	•	•	•
Quartz 63 X 33 X 21	SS	6	26°	•					•	•		•		•	•
Rachael 66 X 36 X 20	A	6	28°	•	•	•	•	•	•	•	•	•	•	•	•
Rachael 72 X 36 X 20	A	8	31°	•	•	•	•	•	•	•	•	•	•	•	•
Redondo 60 Dia. X 20	A	6	31°	•					•		•	•		•	•
Redondo 69 Dia. X 18	A	8	36°	•					•		•	•		•	•
Regal 70 X 43 X 19	G	6	31°	•	•				•	•	•	•		•	•
Regal 71 X 34 X 19	G	6	31°	•	•				•	•	•	•		•	•
Regan 54 X 36 X 18	A	6	30°	•			•	•							
Regan 60 X 32 X 18	A	6	30°	•			•	•							
Regan 60 X 36 X 18	A	6	30°	•			•	•							
Regan 66 X 32 X 15	A	6	30°	•			•	•							
Regan 66 X 32 X 18	A	6	30°	•			•	•							
Regan 72 X 32 X 20	A	6	30°	•			•	•							
Riley 60 X 42 X 21	A	6	26°	•					•	•	•	•		•	•
Riley 66 X 42 X 21	A	6	36°	•					•	•	•	•		•	•
Riley 72 X 42 X 21	A	6	38°	•					•	•	•	•		•	•
Rincon 59 X 59 X 21	A	6	23° & 20°	•			•	•	•	•	•	•		•	•
Rosemarie 60 X 32 X 18	A	6	23°	•	•	•	•	•	•	•	•	•	•	•	•
Ruby 60 X 36 X 19	SS	6	35°	•	•		•	•	•	•		•		•	•
Ruby 60 X 42 X 16	SS	6	35°	•	•		•	•	•	•		•		•	•
Ruby 60 X 42 X 19	SS	6	35°	•	•		•	•	•	•		•		•	•
Ruby 72 X 36 X 16	SS	6	35°	•	•		•	•	•	•		•		•	•
Ruby 73 X 42 X 19	SS	6	35°	•	•		•	•	•	•		•		•	•
Sapphire 41 X 28 X 20	SS	6	38°	•	•		•	•	•	•		•		•	•
Shannon 60 X 30 X 20	A	6	28°	•			•	•							
Shannon 60 X 32 X 20	A	6	28°				•	•							
Shannon 66 X 32 X 20	A	6	28°				•	•							
Savannah 66 X 44 X 24	A	10	24°	•	•				•	•	•	•		•	•
Savannah 74 X 44 X 24	A	10	24°	•	•				•	•	•	•		•	•
Solitude 60 X 30 X 20	A	6	30°	•	•	•	•	•	•	•	•	•	•	•	•
Solo 54 X 30 X 19	A	6	38°	•	•	•	•	•	•	•	•	•	•	•	•
Solo 60 X 32 X 19	A	6	36°	•	•	•	•	•	•	•	•	•	•	•	•
Solo 60 X 36 X 19	A	6	37°	•	•	•	•	•	•	•	•	•	•	•	•
Solo 66 X 34 X 19	A	6	35°	•	•	•	•	•	•	•	•	•	•	•	•
Solo 72 X 36 X 19	A	6	38°	•	•	•	•	•	•	•	•	•	•	•	•
Stella 70 X 36 X 19	A	6	28°	•	•		•	•	•	•	•			•	•

* A = ACRYLIC G = GEL COAT SS = HYDROLUXE SS™
 OPTIONS IN RED ARE STANDARD WITH TUB

MODEL NAME & OUTSIDE DIMENSIONS (length X width X depth)	TUB MATERIAL*	JETS	BACKREST SLOPE	THERMAL AIR	UNDERMOUNT	FREE-STANDING	SKIRT	TILE FLANGE	LINEAR DRAIN	MICRO MOUNT	HYDRO BLANKET	LED CHROMA-THERAPY	DUAL COLORS	GRAB BARS	REMOTE CONTROL
Studio 59 X 59 X 21	A	6	23° & 20°	•			•	•							
Studio 60 X 32 X 19	A	6	36°	•			•	•						•	
Studio 60 X 36 X 19	A	6	37°	•			•	•							
Studio 60 X 42 X 20	A	6	35°	•			•	•						•	
Studio 72 X 36 X 19	A	6	38°	•			•	•							
Studio 72 X 42 X 20	A	6	34°	•			•	•							
Studio DO 66 X 44 X 19	A	6	28°	•											
Studio DO 74 X 44 X 19	A	6	31°	•											
Studio HG 60 X 42 X 21	A	6	25°	•			•	•							
Studio HG 72 X 42 X 21	A	6	25°	•			•	•							
Studio O 60 X 42 X 20	A	6	26°	•											
Studio O 66 X 42 X 21	A	6	35°	•											
Studio O 72 X 42 X 21	A	6	38°	•											
Sydney 60 X 30 X 17	A	6	28°	•			•	•	•		•	•		•	•
Sydney 60 X 30 X 20	A	6	28°	•			•	•	•		•	•		•	•
Sydney 60 X 32 X 17	A	6	28°	•			•	•	•		•	•		•	•
Sydney 60 X 32 X 20	A	6	28°	•			•	•	•		•	•		•	•
Sydney 60 X 34 X 20	A	6	28°	•			•	•	•		•	•		•	•
Sydney 60 X 36 X 20	A	6	28°	•			•	•	•		•	•		•	•
Sydney 66 X 32 X 20	A	6	28°	•			•	•	•		•	•		•	•
Sydney 72 X 32 X 20	A	6	28°	•			•	•	•		•	•		•	•
Sydney 72 X 36 X 20	A	6	28°	•			•	•	•		•	•		•	•
Sydney 72 X 40 X 20	A	6	28°	•			•	•	•		•	•		•	•
Sylvia 60 X 38 X 21	A	6	20°	•					•	•	•	•		•	•
Sylvia 66 X 38 X 21	A	8	23°	•					•	•	•	•		•	•
Sylvia 66 X 42 X 21	A	8	21°	•					•	•	•	•		•	•
Topaz 69 X 48 X 20	SS	6	30°	•					•			•		•	•
Topaz 74 X 45 X 24	SS	8	24°	•					•			•		•	•
Vanessa 72 X 42 X 21	A	6	37°	•					•		•	•		•	•
Versailles 66 X 36 X 20	A	8	23°	•	•	•	•	•	•	•	•	•	•	•	•
Versailles 72 X 36 X 20	A	8	25°	•	•	•	•	•	•	•	•	•	•	•	•
Versailles 72 X 42 X 20	A	8	25°	•	•	•	•	•	•	•	•	•	•	•	•
Victoria 73 X 48 X 24	A	8	38° & 26°	•	•			•	•	•	•	•	•		•
Whitney 62 X 62 X 21	A	6	20° & 7°	•			•	•	•	•	•	•		•	•
Yvette 72 X 42 X 21	A	8	28°	•					•		•	•		•	•



SHOWER PANS





SQUARE PAN

- HP 3232 32" X 32" | Acrylic or Gelcoat
- HP 3636 36" X 36" | Acrylic or Gelcoat
- HP 4242 42" X 42" | Acrylic or Gelcoat



CORNER PAN

- HPN 3636 36" X 36" | Acrylic or Gelcoat
- HPN 3838 38" X 38" | Acrylic or Gelcoat
- HPN 4242 42" X 42" | Acrylic or Gelcoat
- HPN 4833 48" X 33" | LH/RH | Acrylic



HYDROLUXE SS™ PAN

- HPS 6030 60" X 30" | LH/RH | Hydroluxe SS™
- HPS 6032 60" X 32" | LH/RH | Hydroluxe SS™
- HPS 6036 60" X 36" | LH/RH | Hydroluxe SS™



RECTANGULAR PAN

HP 3460 34" X 60"	Center Drain	Gelcoat
HP 3634 36" X 34"	Center Drain	Acrylic or Gelcoat
HP 3642 36" X 42"	Center Drain	Acrylic or Gelcoat
HP 4234 42" X 34"	Center Drain	Acrylic or Gelcoat
HP 4236 42" X 36"	Center Drain	Acrylic
HP 4248 42" X 48"	Center Drain	Acrylic
HP 4450R 44" X 50"	Roll in	Center Rear Drain Acrylic
HP 4832 48" X 32"	Center Drain	Acrylic
HP 4834 48" X 34"	Center Drain	Acrylic or Gelcoat
HP 6030E 60" X 30"	End Drain LH/RH	Acrylic
HP 6032 60" X 32"	Center Drain	Acrylic or Gelcoat
HP 6032E 60" X 32"	End Drain LH/RH	Acrylic
HP 6033 60" X 33"	Center Drain	Acrylic
HP 6034 60" X 34"	Center Drain	Acrylic or Gelcoat
HPS 6034 60" X 34"	Tiered Lip	Center Rear Drain Acrylic
HP 6050R 60" X 50"	Roll in	Center Drain Acrylic
HP 6736 67" X 36"	Center Drain	Acrylic
HP 7236 72" X 36"	Center Drain	Acrylic or Gelcoat
HP 7536 75" X 36"	Off Center Drain LH/RH	Acrylic



UNIVERSAL SHOWER PAN

This sleek pan allows for a seamless transition from bathroom floor to waterproof shower. Due to the solid nature of the product, this pan requires no support, and the benefit of a consistent, perfect draining shower base. This pan has custom sizing options allowing for virtually any size or shape of pans and has the ability to custom locate the drain in the base. Available with or without tile flanges and a threshold.



Start building your own by scanning this QR code.



SINK COLLECTION



Solid Surface Sinks



Arc



Ellipse



ARC

22" X 14" X 6" | Hydroluxe SS™



BLOCK

22" X 18" X 4" | Hydroluxe SS™

25" X 18" X 4" | Hydroluxe SS™

Integral overflow not included.



CRESCENT

24" X 16" X 7" | Hydroluxe SS™



ELLIPSE

22" X 15" X 4" | Hydroluxe SS™



PRISM

22" X 15" X 4" | Hydroluxe SS™

39" X 15" X 4" | Hydroluxe SS™

Delicate Touch



DELICATE TOUCH LAUNDRY SINK

21" X 26" X 14" | Acrylic

Smooth or Washboard Interior | Thermal Air or Sink Only

The Delicate Touch laundry sink is a zen outward design, complimented by its depth. This laundry sink is both contemporary in look while practical to use. The ample drying shelf, teamed with either the washboard or smooth slope interior (both available), affords all of the basics required to launder all of your delicates while showcasing your decor. The optional forced-air aeration system provides millions of agitating bubbles to aid in washing. Pleasing looks combined with functional design and premium performance, the Delicate Touch sink redefines the standard and sets the bar for laundry sinks.

Petopia Pet Spa



PETOPIA

21" X 26" X 14" | Acrylic | Thermal Air or Sink Only

A fully customizable tub for the member of the family that is too often overlooked. The Petopia Pet Spa can be made with all the collar bells and dog whistles available on any other tub.

The Walk In Tub

Bringing The Outdoor Spa Experience Indoors

Our active lifestyles subject us to more aches and pains than ever before. Whereas modern medicine has afforded micro surgeries and other solutions to what would have been sidelining injuries a decade ago, modern bathtub technology has brought the outdoor spa indoors.



WALK-IN

52" L X 30" W X 40" D | LH/RH End Drain | Gelcoat Soaking, Thermal Air, Whirlpool, and Combo System Tub
As Shown Below: Whirlpool Option w/ standard 8 jets

The Lifestyle 5230 is a tub that allows the therapeutic benefits of a horizontal bathtub to be realized on a vertical format. Add to that the fact that there is no climbing in and out, and the benefits of this tub prove countless.

For decades the classic designs for indoor therapeutic bathtubs have been somewhat horizontal elements. Luxury tubs have been created for lying down and lounging while reaping the benefits of hot water. With the creation of the Lifestyle 5230, all the benefits of a traditional tub are now in a vertical position, mirroring the position of a traditional outdoor spa. Add to this the ease of entry and exit allowed with the door and you have the best of both worlds.

With the 5230 footprint, standard 8" filler shelf and extension panel, to retrofit into an existing 6030 or 6032 opening now allows for more options and a roomier bathing experience with this design of tub. Compared to similar style tubs on the market, this unit has a lower threshold, comfortable seat height and, with its 40 inch overall height and wider seat, provides more room and a better soaking height while seated. And when you are done with the bath its 2" drain allows for a quick drain and less time spent waiting for the water to exit before getting out of the tub. These are just some of the advantages of the vertical bathtub!





Biscayne





FEATURES & ACCESSORIES

HYDRO SYSTEMS

The Industry-Setting Standard That Sets Us Apart

Every person is unique, but we all share one common connection: Water. Your bathing ritual is personal to you, which is why we believe your hydrotherapy experience should be tailored specifically to meet your individual needs and desires.

Hydro Systems proudly offers a vast array of tubs for your bathroom size and configuration, spanning freestanding, drop-in and walk-in models. Whether soaking or a jetted tub is your preference, our range of deluxe features and functions are designed to help you achieve the ultimate in personal bathing satisfaction.

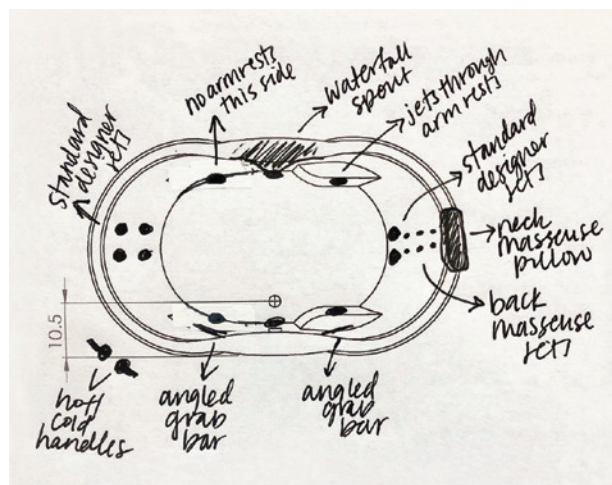
Our bathing systems are not "one size fits all," as every bather is different. Our bathtubs are built to order, allowing us to craft the optimal product to enjoy this special and restorative experience.

CUSTOMIZE YOUR HYDROTHERAPY EXPERIENCE

Simply seeking a long and rejuvenating daily soak? Need site-specific relief for chronic neck pain, and have an interest in chromatherapy?

At Hydro Systems, we relish the customization process, firmly believing that a personalized hydrotherapy session yields the greatest benefit to you. An endless combination of premium construction, innovative technology, and distinct design awaits.

Our insistence on quality has made Hydro Systems bathtubs the best-built, best-backed, best-performing bathtubs on the market. The following is an in-depth look at the superior Hydro Systems standard.



Example of customized bathtub

HIGH-END MATERIALS

QUALITY OF ACRYLIC SHEET & FIBERGLASS REINFORCEMENT

As ancient as the ritual of bathing is, the technology behind it continues to evolve. We have always utilized the highest-quality materials and processes to construct our bathtubs, starting with deep lustrous acrylic sheets with fiberglass reinforcement.

Lightweight and easy to install, acrylic remains a popular choice of material for its cost efficiency, durability and low maintenance. Our exclusive resin and fiberglass structure combined with superior quality acrylic make us leaders in heat reflectivity, structural integrity and dimensional stability.

LONG-LASTING, BEAUTIFUL FINISHES

Acrylic is smooth and non-porous, creating a surface that is easy to clean and maintain. Not only providing a beautiful long-lasting luster, the acrylic with our layers of fiberglass backing boosts your bathtub's performance by providing both sound and temperature insulation.

Additionally, acrylic is a highly versatile option for your design needs, with an extensive spectrum of colors to choose from.

THE NEXT EVOLUTION: HYDROLUXE SS™

At Hydro Systems, we continuously source the finest materials from which we create our products. Our relentless pursuit of perfection has led us to hone and test our processes to proudly introduce HydroLuxe SS™, the evolution of Sculpted Stone bathtubs.

The HydroLuxe SS™ range of seamless, solid-surface vessels is made from a refined mix of rich organic elements and the very best of engineered resins. The Prolite system we add is uniquely packed with particles, making it a standout in the marketplace when it comes to efficiency and bonding strength.

Discover how HydroLuxe SS™ represents the latest in eco-friendly technology on page 103.

THE SUPPORT PLATFORM

Our integrally encapsulated easy level support platform makes installation seamless, fast and easy.

RIGID PIPE CONSTRUCTION

Created with 100% rigid PVC pipe, our self-draining whirlpool system is constructed to be hygienically safe, preventing bacterial growth due to mildew or algae, along with other germ-laden problems.



Fiberglass backing applied to acrylic bathtub



Liberty tub made of Hydroluxe SS™



Installation of PVC pipes for whirlpool system

CUSTOM PUMP LOCATIONS

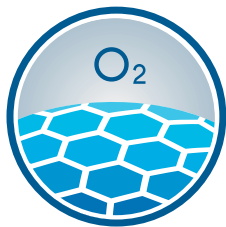
For your unique spacing requirements, we will custom locate the pump at no additional charge on the Designer and STON collection tubs.

SILENT AIR CONTROLS & "SOFT TOUCH" ELECTRONIC CONTROL PANEL

Silent air controls give you the peace and quiet you deserve while relaxing in our whirlpool system. Both the Hydro Systems "Soft Touch" Electronic Control Panel and Remote Control Panel put the commands right at your fingertips - wet or dry, wherever they happen to be.

STANDARD SAFETY FEATURES

Safety remains at the forefront of the Hydro Systems mission. Slip-resistant bottoms and anti-vortex safety suction covers ensure a safe bathing experience for every member of your family. In addition, all tubs are manufactured in accordance with the appropriate IAPMO and UL requirements, where applicable.



HYDROZONE

THE HIGHEST HYGIENIC STANDARDS

HydrOzone, standard on **all** thermal air systems and whirlpool systems, immediately begins sanitizing your water while running your hydrotherapy system. This feature creates an anti-bacterial environment so you can enjoy the peace of mind that comes with bathing in clean, pristine water. Learn more about HydrOzone's natural process on page [insert final page number].



4-Button Soft Touch Electronic Control Panel

THERMAL AIR SYSTEM

UNWIND & REAP THE THERAPEUTIC BENEFITS

We encourage you to configure your tub with the location and quantity of jets and type of jet therapy. For those seeking pampering akin to the Swedish Massage technique, the Thermal Air System is for you. Feel your stress and fatigue wash away and instantly be soothed into a sense of wellbeing, from the top of your neck to the soles of your feet.

Millions of tiny heated bubbles are propelled from strategically placed, barely visible jets. The heat works to relax the body, making it more receptive to the benefits of gentle massage, activating the immune system and increasing blood flow to the muscles. The combination of heat and air movement within the water promotes deep relaxation, while providing therapeutic effects to relieve sore muscles, joint pain and inflammation.



Michelangelo w/ Thermal Air System

WHIRLPOOL JET SYSTEM

PROVIDING POWERFUL RELIEF, WHERE YOU NEED IT MOST

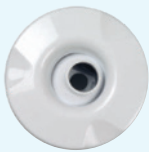
The Whirlpool is the Deep Tissue counterpart to our jet system, providing powerful massaging jets to target and alleviate sore, aching muscles. High-performance jets directed at specific body areas promote increased blood flow, resulting in where-you-want-it pain relief, improved flexibility, and for some, the reduced appearance of cellulite. Whirlpool therapy can greatly benefit those with chronic pain or specific injuries, such as backaches, neck pain, sprains or other ailments.



Kayla w/ Whirlpool System, Back Masseuse, & Neck Masseuse

CUSTOM LOCATED, ADJUSTABLE, VOLUME CONTROLLED JETS

Ensure the comfort of your tub by individually locating our fully adjustable, volume controllable jets at no additional charge on the Designer or STON collection tubs.



STANDARD STUDIO JET

The standard Studio Jet is a directional jet that has the added benefits of volume control, thus allowing you to increase or decrease the pressure of the massage in different directions.



STANDARD ADJUSTABLE/DIRECTIONAL DESIGNER JET

This is Hydro Systems standard whirlpool jet. It is directionally adjustable by moving the nozzle. The pressure is adjusted by rotating the jet from full flow to completely off.



SWIRLING ADJUSTABLE DESIGNER JET

This popular upgrade provides a swirling, pulsating flow of water. Just as the Standard Adjustable/Directional Designer jet, the pressure is adjustable by easily rotating the jet face.



JUMBO JET

This optional, extra large therapeutic jet was adapted from the outdoor spa industry. This jet produces a higher water flow volume, with less velocity. It is fully adjustable, with directional and volume controls, providing a great option to a whirlpool system.

JUMBO ROTATING JET

This extra large spinning therapeutic jet was also adapted from the outdoor spa industry. Similar in operation to the Swirling Designer Jet, this jet affords a rotational, pulsating action.



MICRO THERAPY JET

This jet's unique size allows it to be placed in areas of the tub where a traditional jet will not fit. Many customers opt for these jets near armrests as hand, wrist or lower arm jets for carpal tunnel syndrome relief. This jet is volume controllable.



BACK MASSEUSE SYSTEM 1

These jets are available with the Back Masseuse System 1 and are installed in a series of 6 jets operated by a single volume control. A pulsation massage is created by the swirling action of these jets, providing greater relief than a single jet.



BACK MASSEUSE SYSTEM 2

These jets are available with the Back Masseuse System 2 and are controlled by an electronic keypad. This 6 jet series offers direct flow onto your back. The electronic keypad directs the jets to operate in a Shiatsu pattern utilizing only two jets at a time, as well as the speed of transition from one pair of jets to another.



TUB SKIRTS

Tub + Skirt = Endless Possibilities

With the availability of the seamed and seamless skirts, the opportunities and palette of ideas are endless. Peninsula, corner, free standing, Zen, corner with access skirt: if you can think of the application we can build the tub. Just a brief look at some of the designs captured here is just a glimpse of the possibilities.

SEAMED & SEAMLESS SKIRTS

Seamless skirts are now an option on any tub that can have a skirt. This option affords corner and peninsula installations with ease. Along with the molded flange and new armrest options, the palette is full for any design! 1, 2, 3 & 4 SIDED.

CORNER SKIRTS

To complete the exterior finish of our corner models, this single-piece molded panel option offers access to the system's interior.



▲ Erica with corner skirt.



▲ Lacey with a 2-sided seamless skirt (no access). Room designed by Molly N Switzer Designs.



▲ Sydney-T skirt (no access): this skirt addition gives the modern Sydney a much more traditional look.



▲ Versailles with a 3-sided floating skirt: The floating skirt is designed to give your skirted tub a smaller footprint in the bathroom.



▲ Lacey with a Zen skirt (no access): a 2-sided seamed skirt which meets between the lip of the tub and skirt giving this tub a clean look.



▲ Versailles with a 4-sided seamless skirt. The 4-sided seamless skirt allows you to turn a drop-in bathtub into a freestanding.



▲ Lacey with a Standard skirt option: this skirt option is designed with a beveled skirt panel which gives a more conventional look and also allows you to access equipment when ordering any type of system on your bathtub.



▲ Sydney with an access panel option: now offered is the optional access panel to the current seamless skirted Sydney allowing you the ease of reaching any components added to your bathtub.

THE HYDROTHERMAL THERAPY EXPERIENCE

One of the core principles of hydrotherapy is heat, often referred to as hydrothermal therapy. Today you can bring these wonderful benefits right into your home as part of your personal hydrotherapy experience.

A water temperature of 94 to 96 degrees F (close to skin temperature) promotes relaxation, and begins to loosen tight muscles. Immersion in hotter water (between 102 and 104 degrees F) causes blood vessels to dilate, improving

circulation and providing relief to everyday aches and pains and stress-related conditions such as backache.

Everyone's body reacts differently to various forms of hydrotherapy. Please note hydrotherapy should not be used in lieu of standard medical care. If you have a medical condition or are pregnant, consult with your physician before starting any hydrotherapy program.



Lacey with Hydro Fusion.



Finish that book. With Hydro Fusion, your bath water stays warm as long as you desire.

HYDRO FUSION SOAK THERAPY

REGENERATIVE BENEFITS OF HYDRO SOAK THERAPY

With the chaotic pace we maintain daily, relaxation is key to keeping one's life in balance. As a respite from the hustle and bustle of the every day, a long soak in hot water recalibrates the mind, body and senses. Soaking provides a haven from mental and physical stressors, regenerates your mood and outlook, and helps prepare you for the day or night ahead.

DESIGNED TO KEEP YOU SOAKING COMFORTABLY

Simple and easy to install, Hydro Fusion is a pump and heating system all in one. Virtually undetectable to the human eye, and barely felt to the human touch when operating - the minimal Hydro Fusion propulsion jet disguises the powerful circulation system that it provides.

NO ADDING WATER, NO INTERRUPTIONS

Tubs outfitted with Hydro Fusion system can be set to your specified temperature and this intuitive system keeps your bathwater exactly where you want it. The totally silent unit maintains the ideal temperature without constantly having to add hot water, keeping you soaking comfortably in your Hydro Systems tub longer without any disruption.

HOW DOES IT WORK?

Hydro Fusion automatically senses the presence of water in the tub and activates a standby mode, which allows the system to maintain a programmed water temperature. This intuitive low voltage circulation heater is designed to operate with virtually no water movement and is operated with one touch of the sensor. Best of all, Hydro Fusion can be added to any soaking or thermal air tub, ensuring you can get away, regenerate and recondition your spirit.

HYDRO SYSTEMS IN-LINE HEATERS

Our original Hydro Heat 750 and Hydro Heat 1500 in-line heaters are specifically designed to enhance enjoyment of your whirlpool bathtub, be it a drop-in or alcove model. Available in either 110-volt or 220-volt models, the in-line

heater is totally self-contained and self-regulated. Once filled, the built-in thermostat constantly maintains the temperature of your whirlpool bath, enabling you to reap the benefits for as long as you desire.

HYDRO HEAT 1500



HYDRO HEAT 750



HYDRO HEAT MANIFOLD



INDULGE

Sit, Relax, & Luxuriate

WHAT IS HYDRO INDULGE?

Think of Hydro Indulge as a concentrated dose of oxygen to your bathwater working overtime to cleanse, heal, and restore your skin with millions of micro-sized, oxygen-rich molecules.

Minute in size and mighty in benefits, these molecules combine via the revolutionary single jet Indulge system. Using proprietary technology, air and water are combined to create a dense white cloud of micro bubbles within the bath water.



Once deeply cleaned, your skin is primed to absorb the oxygen it craves, encouraging the release of toxins and enhancing the skin cells' metabolic health and growth.

CAN INDULGE HELP YOUR MOOD?

The Indulge micro bubble system maintains the water temperature through the exothermic reaction of millions of bubbles exploding all around you. The therapeutic effect of this process works by increasing your serotonin level and promoting a feeling of wellbeing and calmness, providing you with the foundation to achieve a deeper night's sleep.

Indulge promotes relaxation by stimulating your skin via a "massage" effect, which has been known to improve restfulness and leave your body feeling warm long after exiting the bath.

WHAT IS SPECIAL ABOUT A MICRO BUBBLE?



Micro bubble
0.01 mm



Skin pore
0.05 mm



Typical bubble
2 mm

Micro bubbles are 10 microns in diameter, making them smaller than the pores on your skin. This allows the micro bubbles to dive in, exfoliate and cleanse all skin pore impurities while removing bacteria that can cause undesirable effects like itchy skin or body odor.



HOW CAN INDULGE HELP YOU LOOK YOUNGER?

Supple, smooth, rejuvenated and radiant skin - these are the hallmarks of skin indulged with oxygen. The Indulge system cleanses, hydrates, revitalizes and tightens your skin. Using your Indulge system 20 minutes a day helps to stimulate the production of collagen, reduces fine lines and wrinkles, and imbues your skin with newfound moisturized elasticity. These benefits are the result of the concentrated blast of oxygen that results in younger, healthier looking skin.



I SUFFER FROM A SKIN CONDITION. CAN INDULGE HELP ME?

For those who suffer from dry skin, eczema, psoriasis or itchy skin, our Indulge system will, without any additives, clean and relieve parched, irritated skin by cleansing, exfoliating and rehydrating its surface. Hydro Indulge is the answer to providing relief through a non-invasive solution.



The Indulge micro bubble system also eliminates unhealthy infection-causing bacterium such as Legionella and Aeruginos, leaving you with the peace of mind of bathing in clean, uncompromised bathwater.

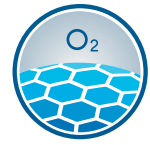
The Indulge "Sauna" effect helps to improve circulation, which helps to dislodge unwanted toxins from your body and bring more oxygen and nutrients to your skin, leaving it healthy and moisturized.

A must add for all Hydro Systems drop-in bathtubs, the benefits of the Indulge system are manifold: helping you to look younger, improve your mood, and even manage or rid you of certain skin disorders.



HYDROZONE

The Ultimate in Sanitary Bathing



HYDROZONE

LIKE BATHING IN BOTTLED WATER

Imagine the peace of mind of knowing that while you indulge yourself with Hydrotherapy, you're also using nature's own proven method to purify your water.

At Hydro Systems, we offer you the choice of adding HydrOzone to your Hydrotherapy system. **Every Designer, Metro, and STON tub with a system comes standard with HydrOzone**, which introduces natural ozone to immediately begin sanitizing your water, providing you with the experience of bathing in filtered and purified water.

This revolutionary feature creates an antibacterial environment in your bath and plumbing system. It's an easy and cost-effective way to ensure a sanitary bathing environment every time you step into your tub.

Our purifying system means reduced maintenance when it comes to cleaning your bathtub, eliminating the need for many harsh chemicals, keeping such elements out of your bathroom and the waste water supply at large.

BENEFITS OF HYDROZONE

ALL NATURAL AND SAFE

Ozone is made naturally from the oxygen we breathe. Instead of having two atoms of oxygen, ozone has three, with the extra atom creating a powerful and natural sanitizer. In water, ozone lasts just long enough – less than one second – to do its purification job. Then it reverts back to regular oxygen, leaving no byproducts in the water.

EFFECTIVE AND PROVEN

Ozonation has been used for over 100 years to sanitize municipal water sources. Almost all bottled water is treated with ozone. And more than 90% of hot tubs and spas already use ozone sanitation systems – not to mention most major water parks and large aquariums.

Ozone is 200 times stronger than household bleach as a purifier, leaving your water pure, free of bacteria, viruses, spores, parasites, and chemicals. It is wonderful for drinking, or using in pools and hot tubs, and most importantly, it's natural.

AUTOMATIC AND MAINTENANCE-FREE

Ozone is automatically introduced to the bath water when the pump is turned on. The HydrOzone system will operate maintenance-free for 9,000 one-hour bathing sessions. That's an hour-long bath a day for approximately 25 years!

WORRIED ABOUT HARMFUL PATHOGENS IN YOUR WATER?

UPGRADE YOUR HYDROZONE TO THE HYDROZONE UV COMBO SYSTEM

The HydrOzone UV Combo System gives you all the benefits of the standard HydrOzone but adds in the use of an Ultraviolet (UV) light. Ultraviolet light rays are proven to penetrate harmful pathogens in your home's water and destroy illness-causing microorganisms by attacking their genetic core (DNA). Disinfecting your water with Ultraviolet light is exceptionally simple, effective and environmentally safe. UV systems destroy 99.99% of harmful microorganisms without adding chemicals.

CHROMATHERAPY

The Natural Effect of Color on our Minds & Bodies

A FULL-SENSORY EXPERIENCE

Chromatherapy is the usage of light and color to alter our mental and physical states. Scientific research reveals that color can greatly influence the condition of our emotions and health, as well as causing positive reactions in our minds and bodies.

You already know how good it feels to walk outside on a clear, warm day. Vital changes occur in response to sunlight (white light) and the spectral range of colors – red, orange, yellow, green, blue and violet. Our Chromatherapy system taps into this natural reaction to light and color to calm or stimulate you, whatever your desired bathing journey may be.

HIGH-INTENSITY LED LIGHT

Whether you want a mood-enhancing atmosphere, a romantic setting or a special bathroom effect, Hydro Systems' high-intensity LED lighting environment creates a unique and peerless bathing ambiance. Built into your bathtub, this digitally controlled, multi-colored lighting feature puts the full-sensory experience in your hands.

INTERIOR LIGHTS

These independent light entry points include two interior light lenses, located below the water line, and allow a superb reproduction of the lighting effect you desire.

TAKE YOUR BATHING EXPERIENCE TO THE NEXT LEVEL

To get the most out of your bathing therapy, add the wonders of chromatherapy. Focus on one specific color for the desired effect, or traverse the spectrum of designer color modes.

COLOR MODES: Experience all ten color modes by turning the bathtub lights on and off to change lighting effects.

SLOW DANCE: Vibrant slow fade through all colors.

MAGENTA: Rejuvenating glow of pink, blue & red.

BLUE: Clear & brilliant, self assured & calming. Increases deep relaxation & helps the healing process.

RED: Radiant & energizing. Stimulates the mind & invigorates the body.

WHITE: Pure, bright white.

SUNBURST: Yellow & orange swirl.

GREEN: Harmonious and balancing. Calms the nerves, relieves stress & centers the soul.

TIDAL FADE: Fade through blues & greens.

AFTERBURNER FADE: Fade through red, orange, pink, yellow & purple.

COLOR BURST: Energetic strobe through all colors.



INTEGRAL WASTE & OVERFLOW

Seamless, Built-in Protection

First and foremost, the value of integral waste & overflow comes with establishing a proper overflow-safe drainage pipeline for your bathtub. An integral overflow is an overflow where an opening is cut along the interior of the bathtub that is tied into the drain waste. In the event the water is left running, this system diverts excess water between the walls and sends it back down the tub drain.

KEEPING YOUR BATHWATER IN THE BATH!

If plumbing and installation is not a priority early on, it will cost you down the line. Much like a standard waste and overflow, an integral W&O reduces possible leak points and keeps your bathwater from overflowing, giving you peace of mind that your bathroom – and wallet – will be protected from damage.

BENEFITS FOR INSTALL & MAINTENANCE

Choosing integral waste & overflow makes the installation of an external overflow pipe and sanitary-t unnecessary, making for a quicker, easier install and saving you in labor costs. Since the overflow channel is built into the bathtub's inner wall, it will never need to be accessed for servicing. You can even mount a tub filler directly over the overflow for a timeless, low-profile look.

The behind-the-scenes nature of this mechanism is a perfect option for those not wanting exposed piping, and why integral W&Os are quickly becoming a trend for modern bathroom design.

DESIGNER OPTIONS

Hydro Systems offers two styles of integral W&Os - round and linear. Both options are available for our range of freestanding, drop-in, corner and alcove tubs, and come in a wide selection of finishes.

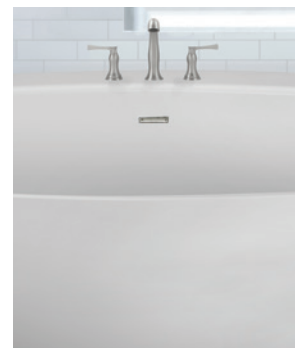
ROUND INTEGRAL OVERFLOW

The round integral waste and overflow cover is the default style for our Designer collection freestanding bathtubs, as it pairs perfectly with classical aesthetics. You can also upgrade to this option for all Designer, STON, and Studio Collection drop-in, corner, and alcove tubs.



LINEAR INTEGRAL OVERFLOW

Standard on all Metro and Studio Collection freestanding tubs. Not only does the linear drain option give your bathtub a sleek look, this minimal slit adds an extra inch to your tub's depth. It is no wonder the linear option is growing in popularity, allowing you to soak even deeper into the warmth of your tub without increasing the overall height.



ENJOY AN AT-HOME PERSONAL MASSEUSE

Two Unique Systems Provide Luxurious Hydro-Massage

BACK MASSEUSE

Millions of people suffer every day from back pain. In fact, back pain is the second most common reason people in the U. S. visit the doctor each year. Hydro Systems' Back Masseuse System is designed to heighten the therapeutic effects of hydrotherapy, by reducing that nagging sensation and promoting increased flexibility.

Our manual system allows you to control water flow to the whirlpool system or the back masseuse, and additionally allows the blending of both options. Utilizing six strategically located jets, our electrically controlled system enables you to set a "shiatsu" type massage that automatically turns the jets on and off to manipulate the tensed muscles up and down the length of your back.

NECK MASSEUSE

The Neck Masseuse is designed to alleviate tension in the body's most vital passageway. The propulsion of water directed onto the neck area increases circulation, which relieves the uncomfortable and painful muscle tightening that comes from accumulated stress. Select the pulse level that best meets your needs: level one for subtle and sleepy, level two for attention-getting and soothing, and level three for intense and maximum stress relief.



Savannah with a back masseuse and neck masseuse system

A LUSH COMBINATION

For a truly lavish experience, bathers can outfit their dual-facing tub with a masseuse system on either end. Additionally, depending on the size of your bathtub, both features can be installed on the rear wall for targeted simultaneous back and neck relief.



Neck Masseuse system in action



Tub with Back and Neck Masseuse together

HYDROLUXE SS™

The Evolution of Sculpted Stone Bathtubs

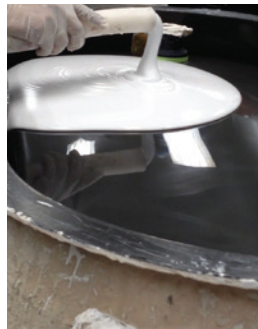
The pinnacle of bathtub technology has arrived with HydroLuxe SS™. Representing the latest in eco-friendly performance, this range of seamless, handcrafted, solid-surface vessels is constructed from a blend of ground natural minerals and the best in man-made composites.

ALCHEMY, PERFECTED

At Hydro Systems two manufacturing facilities, this material undergoes the transformation from liquid to solid, resulting in a bathtub that is a 100% solid surface all the way through, with zero hollow or unfilled areas. The Prolite™ composite system we add is uniquely packed with particles, which bolsters its bonding strength and durability throughout the manufacturing process.

The composition of HydroLuxe SS™ blend brings even more durability to the Hydro Systems standard, providing added protection against surface scratches and stains. The non-porous material naturally acts as a deterrent for bacteria, mold and mildew, giving you added confidence when it comes to cleanliness. All the while, the insulating properties of this high-performance mineral blend keep your bathtub warmer for longer.

Whereas acrylic bathtubs do contain hollow spaces, the HydroLuxe SS™ is a robust, one-piece structure, a striking and modern culmination of the latest advances in bathtub construction.



Hydroluxe SS liquid being poured into tub mold before turning solid.



Mold being removed on tub made of Hydroluxe SS after it has become solid.

A DESIGNER'S DREAM

Each HydroLuxe SS™ bathtub is fully customizable in color and finish, for drop-in and freestanding models spanning the Metro Collection, the STON Collection, and Universal Shower Pans. HydroLuxe SS™ is available in 16 rich and versatile in-stock colors to get you started on bringing your bathroom design dreams to life.

CUSTOM COLOR-MATCHING & FINISHES FOR A STYLE ALL YOUR OWN

Beyond these 16 in-stock colors, the ability to custom color-match anything means a palette limited only by your imagination. As the only manufacturer to offer color-matching, Hydro Systems enables you to realize your wildest design dreams and express your unique personality.

Taking your bathroom decor to the next level, HydroLuxe SS™ bathtubs can also be customized with a metallic polish, a matte treatment, or a two-tone finish to fit with any specific bathroom aesthetic. Metallic surfaces come in galvanized, weathered nickel, or polished nickel and are available on all Hydro Systems freestanding bathtubs.

Exquisitely crafted and fully customizable, HydroLuxe SS™ answers the call for the ultimate in luxurious, natural bathing.

Note: Colors are as accurate as printing will allow. Please consult your Sales Representative regarding exact colors prior to making your final purchase.

HYDROLUXE SS™ COLOR CHOICES



Mizu in two-tone white and custom orange



Newbury with Galvanized Finish



Pearl in Red



Georgetown with Polished Nickel Finish



Millennium in two-tone black and white with a gold band



Domingo with Weathered Nickel Finish

OTHER TUB OPTIONS

MICRO MOUNT

The Micro Mount feature not only gives your bathtub a whole new look but it also provides you easier access upon exiting your tub as the deck sits more flush with your surroundings. When adding the Micro Mount feature, the lip height of your tub is reduced to approximately half an inch.



Side-by-side comparison of bathtub with micro mount versus a traditional deck height

We consider this as a must add option when ordering an eligible drop-in bathtub that will be a deck-mounted installation.

Note: Available on all drop-in bathtubs without a decorative edge.



Liliana with micro mount

MOLDED ARMRESTS

Molded armrests are now available on virtually any tub in the entire product line! This new option opens an entirely new chapter in the history of customizing a tub any way desired.

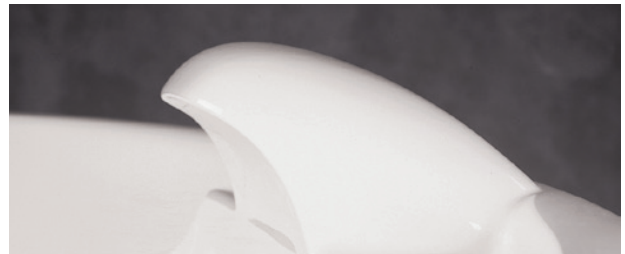
Note: Adding armrest to bathtub may create an interior detail line.



WATERFALL FILL SPOUT

What a wonderfully relaxing way to further enhance your bathing experience and whirlpool system. Sit back and relax while our integrally molded-in waterfall fill spout fills your tub with a beautiful sheet of cascading water – available on most of our models. The waterfall fill spout adds style to your bathroom and fits with any style of hot and cold valves you select to compliment your existing bathroom decor.

Our recirculating waterfall option provides the tranquil sound of a real waterfall, bringing the

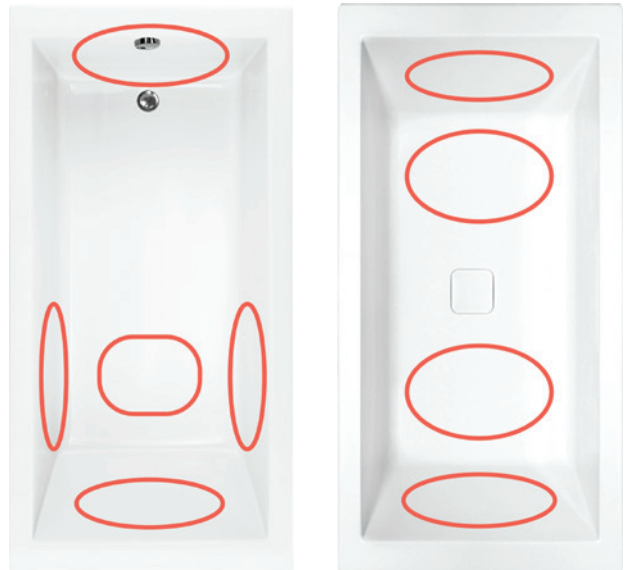


serenity of outdoors right into your home. These waterfall fill spouts come ready-to-plumb with a 3/4" M.I.P. PVC adapter.

Note: Faucet valves not supplied by Hydro Systems.

HYDRO BLANKET

Close your eyes, lean back and feel the warmth of the Hydro Blanket that emanates through the acrylic tub surface. By integrating radiant heat panels into the structure of your bathtub the result is a seamless improvement in your overall bathing experience. To best satisfy our full array of models & personalize your experience, we offer multi-zone heat allowing you to pick from 2–5 heat zones on your bath. Your bath, your desired session, your design ... simply improved.



GRAB BARS

A set of our optional grab bars enhance the styling and add functionality to any Hydro Systems bathtub. Add them to assist with getting in or out of your bathtub. Available on most tubs and come in two distinct styles and your choice of finish.

STANDARD GRAB BARS

Designed to be mounted on most flat or curved surfaces.



UNIVERSAL GRAB BARS

This bar affords a mounting solution in virtually any position on any tub.



ACRYLIC COLOR CHOICES

Sometimes, all a room needs to go from drab to dramatic is one bold stroke of color. Whether you are blending into a space you've created or accenting your style with a knockout centerpiece of design, we've got your color! Hydro Systems offers a wide spectrum of colors to give you the freedom to match or coordinate to any palette.

Note: Colors are as accurate as printing will allow. Please consult your Sales Representative regarding exact colors prior to making your final purchase. Other colors may be available.



White



Biscuit



Bone



Black



Ice Grey



Sandbar

TOWER

Want to get a freestanding tub but don't want a floor mounted tub filler? Add a tower, these can be added to any of our freestanding bathtubs allowing you to use traditional Roman faucets.

When ordering a freestanding bathtub the tower can also accommodate a blower within it. If ordering a whirlpool the pump can be contained as well but is only available on certain freestanding models. This will change the depth of the shelf to a maximum of 14".

The tower can be ordered in lengths as short as 18" and as long as 60". Choose size based upon amount of holes needed for faucet and look you want with your bathtub.



REMOTE CONTROL

Adding a remote control to your bathtub purchase can make turning on and off your system that much easier. Don't ever exit your bathtub again when you want to turn on any of your systems. The Hydro Systems remote control can work on any bathtub purchase that contains a system. This includes the ability to control your whirlpool, thermal air, back massage, LED-Chromatherapy lighting, Hydro Fusion, or Hydro Indulge systems. Consider adding a remote control system on your next bathtub purchase.

A remote control system is especially valuable on all freestanding Hydroluxe SS bathtubs

which cannot have a soft-touch control pad added onto the bathtub. Traditional control pads must be remotely mounted on all freestanding Hydroluxe SS bathtubs.

Additionally, this remote control is both waterproof and floats.

Remote control does not come standard with any bathtub and must be ordered separately.

Note: Remote control can only be programmed to operate 2 pump systems on a bathtub (i.e. whirlpool, indulge, fusion).



HYDRO COAT

Hydro Coat is a water based, non-hazardous temporary protective coating designed for use on fiberglass, acrylic, stainless steel and most other non-porous surfaces. Hydro Coat is used to eliminate unnecessary repairs and clean up after shipping, storage, fabrication and installation. Hydro Coat protects surfaces – even in direct sunlight.

Peels off easily leaving a clean, preserved surface. Simply peel off the Hydro Coat protectant when you are ready to use your Hydro Systems, Inc. tub to help prevent damages.





Daniela



Room designed by Lococo Architecture

Tribeca

H|S

HYDRO SYSTEMS

Family Owned And Operated Since 1978



MADE IN AMERICA

H|S

HYDRO SYSTEMS

Family Owned And Operated Since 1978



MADE IN AMERICA

HYDROSYSTEM.COM

29132 Avenue Paine
Valencia, CA 91355
Ph: 661-775-0686



facebook.com/HydroSystemsInc



instagram.com/hydrosystems



linkedin.com/company/hydro-systems-inc



twitter.com/HydroSystemsInc